

# **Barnyard Mardi Gras!**



**2018  
Northwest Kansas  
District Free Fair, Inc.**

**July 28th - August 4th  
Goodland, KS**



## **Northwest Kanas District Free Fair, Inc.**

### **Fair Board Officers**

Aaron Duell-President  
Matthew Gattshall-Vice-President  
Janet Bear-Treasurer  
Cris Wilson-Secretary

### **Fair Board Members**

Craig Boggio  
Janet Bear  
David Dorn  
Michael Dorn  
Aaron Duell  
Adam Duell  
Steve Duell  
Matthew Gattshall  
Wilson Henry  
Kaleb Keith  
Darold Schuster  
Doug Sederstrom  
Greg Sederstrom  
Terry Taylor  
Mike Vandiver  
Cris Wilson  
Sam Zelfer

### **Howdy Rowdy Rodeo Coordinator**

Amy Sederstrom

### **Vendor & Open Class Coordinator**

Colleen Duell

### **Sherman County Commissioners**

Larry Enfield  
Rodney Blake  
John Topliff

### **Sherman County Extension Staff**

Karen Nelson-4-H Youth Development Agent  
Sherri Keith-Office Professional  
Terri Richardson-Technology Assistant

## **Open Class Division Fair Superintendents**

Art	
Beef	Mike Sieck
Cats	Teresa Sieck
Crafts	Jill Deeds, Dana Fulcher
Crops	Marty Melia, Mary Butler
Dog Show	Melvin Crow
Floriculture	Anita Coleman
Food Preservation	Jan Lohr
Foods	Jan Lohr
Garden	Marty Melia, Mary Butler
Goat	Dani Mangus, Charlene Mangus
Horse Show	Mellanie Goodwin
Needlework	Jill Deeds, Dana Fulcher
Pets	Teresa Sieck
Photography	Brittney Heiter
Poultry	Colleen Gattshall
Rabbit	Amber Berndt
Sheep	Jerry Nemechek
Space Tech	
Swine	Aubera Winter
Wheat Show	
Woodworking	

## **4-H Division Fair Superintendents**

Art	Karen Gillihan
Beef	Mike Sieck
Booths	Cris Wilson
Catch-It-Pig	Cris Wilson
Cats	Teresa Sieck
Clothing	Mandi Martin
Cloverbuds	Cris Wilson
Crafts	Karen Gillihan
Crops	Harold Gillihan
Dog Show	Melvin Crow
Energy Management	Cris Wilson
Entomology	Cris Wilson
Fiber Arts	Mandi Martin
Floriculture	Christie Rasure
Food Preservation	Colleen Duell
Foods	Colleen Duell
Forestry	Cris Wilson
Garden	Harold Gillihan
Geology	Cris Wilson
Goat	Dani Mangus, Charlene Mangus
Home Environment	Jill Berrigner
Horse Show	Mellanie Goodwin
Pets	Teresa Sieck
Photography	Brittney Heiter
Poultry	Colleen Gattshall
Project Poster	Cris Wilson
Rabbit	Amber Berndt
Sheep	Jerry Nemechek
Small Engines	Cris Wilson
Space Tech	Scott Lockhart
Style Revue - Constructed Garments	
Style Revue - Purchased Garments	
Swine	Aubera Winter
Wildlife	Cris Wilson
Woodworking	Karen Hooker

## Open Class Division Index

Open Class General Rules	9
Open Class Dog Show	10
Agility	12
Obedience	12
Rally	12
Showmanship	12
Open Class Exhibit	12
Aquarium Pets	12
Art	13
Cat	13
Crafts	14
Crops	14
Floriculture	15
Food Preservation	16
Foods	19
Garden	20
Hand Pet	22
Needlework	22
Photography	23
Space Tech	24
Woodworking	24
Open Class Horse Show	25
Halter Class	26
Performance	26
Showmanship	28
Versatility	28
Open Class Livestock	28
Breeding Beef	30
Breeding Goat	30
Breeding Sheep	30
Breeding Swine	30
Bucket Calf	31
Dairy Beef	31
Dairy Goat	31
Market Beef	31
Market Goat	32
Market Sheep	32
Market Swine	32
Poultry	33
Rabbit	33
Appendix	
Sample Open Class Entry Tag	79
Photography Mounting Diagram	80

## 4-H Division Index

4-H General Rules	34
4-H Dog Show	35
Agility	36
Obedience	37
Rally	38
Showmanship	38
4-H Exhibit	38
Aquarium Pets	38
Art	39
Booths	39
Cats	40
Clothing	41
Cloverbuds	42
Crafts	42
Crops	43
Energy Management	43
Entomology	44
Fiber Arts	46
Floriculture	47
Food Preservation	47
Foods	48
Forestry	50
Garden	51
Geology	52
Hand Pets	54
Home Environment	55
Photography	55
Project Poster	57
Small Engines	57
Space Tech	58
Style Revue - Constructed Garments	62
Style Revue - Purchased Garments	62
Wildlife	63
Woodworking	64
4-H Horse Show	64
Halter Class	66
Performance	66
Showmanship	67
Versatility	67

## 4-H Division Index (continued)

4-H Livestock	67
Breeding Beef	72
Breeding Goat	72
Breeding Sheep	73
Breeding Swine	73
Bucket Calf	73
Dairy Beef	74
Dairy Goat	74
Market Beef	74
Market Goat	74
Market Sheep	75
Market Swine, Catch-It-Pig	75
Poultry	76
Rabbit	76
Rabbit Fur	77
Sheep Lead	77
Showmanship Beef	77
Showmanship Goat	77
Showmanship Poultry	78
Showmanship Rabbit	78
Showmanship Sheep	78
Showmanship Swine	78
Appendix	
Photography Mounting Diagram	80
4-H Livestock Sale Order	81
4-H Donors	82
4-H Livestock Buyer	83

## Entry and Judging Schedule

Open Class	Entry Time	Judging Time
Art	T 8-11 AM	T 11:30 AM
Beef*	T 8-10:30 AM	H 9:00 AM
Cats*	July 23 1:00 PM	July 23 1:00 PM
Crafts	T 8-11 AM	T 11:30 AM
Crops	T 8-11 AM	T 11:30 AM
Dog Show*	July 21 8:00 AM	July 21 8:30 AM
Floriculture	T 8-11 AM	T 11:30 AM
Food Preservation	T 8-11 AM	T 11:30 AM
Foods	T 8-11 AM	T 11:30 AM
Garden	T 8-11 AM	T 11:30 AM
Goat*	T 8-10:30 AM	T 3:00 PM
Horse Show*	July 27 7:45 AM	July 27 9:00 AM
Needlework	T 8-11 AM	T 11:30 AM
Pets*	July 23 8:30 AM	July 23 8:30 AM
Photography	T 8-11 AM	T 11:30 AM
Poultry*	M 12-1:30 PM	M 2:30 PM
Rabbit*	M 12-1:30 PM	M 2:30 PM
Sheep*	T 8-10:30 AM	T 1:00 PM
Space Tech	T 8-11 AM	T 11:30 AM
Swine*	T 8-10:30 AM	W 8:00 AM
Wheat Show*	July 11	Pre-Judged
Woodworking	T 8-11 AM	T 11:30 AM

**\*Pre-Entry due before July 11th to the Extension Office.**

4-H	Entry Time	Judging Time
Art*	M 8:00 AM	M 8:00 AM Conf
Beef*	T 8-10:30 AM	H 9:00 AM
Booths*	M Setup	T 11:30 AM
Catch-It-Pig	July 27 5:00 PM	W 8:00 AM
Cats*	July 23 1:00 PM	July 23 1:00 PM
Clothing*	M 8:00 AM	M 8:00 AM Conf
Cloverbuds*	M 10:30 AM	M 10:30 AM Conf
Crafts*	M 8:00 AM	M 8:00 AM Conf
Crops*	T 8-11 AM	T 11:30 AM
Dog Show*	July 21 8:00 AM	July 21 8:30 AM
Energy Management*	T 8-11 AM	T 11:30 AM
Entomology*	T 8-11 AM	T 11:30 AM
Fiber Arts*	M 8:00 AM	M 8:00 AM Conf
Floriculture*	T 8-11 AM	T 11:30 AM
Food Preservation*	M 8:00 AM	M 8:00 AM Conf
Foods*	M 8:00 AM	M 8:00 AM Conf
Forestry*	T 8-11 AM	T 11:30 AM
Garden*	T 8-11 AM	T 11:30 AM
Geology*	T 8-11 AM	T 11:30 AM
Goat*	T 8-10:30 AM	T 3:00 PM
Home Environment*	July 23 2:00 PM	July 23 2:00 PM
Horse Show*	July 27 7:45 AM	July 27 9:00 AM
Pets*	July 23 8:30 AM	July 23 8:30 AM
Photography*	T 8:00 AM	T 8:00 AM Conf
Poultry*	M 12-1:30 PM	M 2:30 PM
Project Poster*	T 8-11 AM	T 11:30 AM
Rabbit*	M 12-1:30 PM	M 2:30 PM
Sheep*	T 8-10:30 AM	T 1:00 PM
Small Engines*	T 8-11 AM	T 11:30 AM
Space Tech*	T 8:00 AM	T 8:00 AM Conf
Style Revue - CG*	July 24 8:30 AM	July 24 8:30 AM
Style Revue - PG*	July 24 8:30 AM	July 24 8:30 AM
Swine*	T 8-10:30 AM	W 8:00 AM
Wildlife*	T 8-11 AM	T 11:30 AM
Woodworking*	T 8:00 AM	T 8:00 AM Conf

**\*Pre-Entry must be posted to Fair Entry before July 11th.**  
[www.nwksfair.fairentry.com](http://www.nwksfair.fairentry.com)



## ◆ NORTHWEST KANSAS DISTRICT FREE FAIR, INC.

1. No admission will be charged at the gates leading into the fairgrounds. Admission will be charged at the grandstand for some programs and performances. No passes will be issued.
2. The following rules are prescribed by the Northwest Kansas District Free Fair, Inc. for operation of the fair in all divisions and departments. The association reserves the right to interpret these rules and regulations and arbitrarily settle all questions about the fair.

## ◆ HOW TO READ THIS BOOK

### Formatting Structure for Departments

1. General rules apply.
2. Pre-entry required. or No pre-entry required.
3. Age Groups [If applicable, professional or special needs should be noted on the entry tag.]:
4. Awards (Ribbon Count):
5. Additional Information

### Formatting Structure for Classes

Class Number    Class Description [Additional Information]  
(Limit of Entries)

## ◆ OPEN CLASS GENERAL RULES

1. This division is open to youth and adults.
2. Pre-entry in some areas is required and due to the Sherman County Extension Office on or before the designated deadline. See the entry and judging schedule page of this book for the list of classes that must be pre-entered and deadlines.
3. All entries are final after the fair pre-entry deadline (deadline can be found on the entry and judging schedule page of this book). Absolutely no changes will be accepted after the pre-entry deadline. It is the responsibility of the exhibitor to make sure all entries are entered correctly prior to the fair pre-entry deadline.
4. All ages are as of 1-1 of the current year.
5. Exhibit tags must be filled out for each entry. Open Class tags may be obtained at the Sherman County Extension Office before the fair. Open class tags may be filled out and attached before the fair or at entry time.
6. If an entry is made in the Open Class division, it cannot be entered in the 4-H division.
7. All premiums will be: Blue \$3, Red \$2, White \$1 unless otherwise stated.
8. Showmanship monetary premiums supplied by First National Bank, Goodland, KS (paid at the time of judging) Blue \$3, Red \$2, White \$1.
9. All youth will receive placings in Open Class. Adults will only receive placing for 1st, 2nd, and 3rd in each class in Open Class.
10. If there are fewer than 3 exhibits in a class, discretion of the judge will be used on champion and reserve champion awards.
11. Any person attempting to interfere with the judges or anyone who publicly voices disapproval of the judge's decision shall forfeit any awards won.
12. Decisions of the judges shall be final subject only to written protests which shall be acted upon.
13. There is a universal release time from 8:00 - 10:30 a.m.

on the final Saturday of fair. All articles must be claimed by 10:30 a.m. Failure to comply with this requirement will bar said exhibitor from participating in premiums which may have been awarded by the judges in any department of the fair. The Extension Office and Fair Board will not be held responsible for picking up articles not claimed.

14. In no event, shall the Northwest Kansas District Free Fair or the Sherman County Extension Office be held responsible for any loss or damage to the property or person of exhibitor or other persons while on the fairgrounds whether said loss or damage shall arise from accident or any cause whatsoever.
15. All protests must be made in writing to the president of the fair board, accompanied by an affidavit setting forth the grounds of protest. Such protests must be filed on or before 3:00 pm of Friday of fair.
16. All premiums may be picked up at the time of scheduled exhibit release. Open Class will receive their premiums from the Fair Office near the entrance to the grandstands. All unclaimed checks will be in the Sherman County Extension Office for 3 weeks following the fair. After 3 weeks, they will be turned over to the Fair Board. All checks will be void 90 days after fair.

#### ◆ OPEN CLASS DOG SHOW

1. General rules apply.
2. Pre-entry required.
3. Age Groups:  
Pre-School  
Junior Age 7-9  
Intermediate Age 10-13  
Senior Age 14 and Older
4. Awards (CC-21, RCC-21, GC-14, RGC-14):  
Class Champion Agility On Leash  
Reserve Class Champion Agility On Leash  
Class Champion Dog Agility Off Leash I  
Reserve Class Champion Dog Agility Off Leash I  
Class Champion Dog Agility Off Leash II  
Reserve Class Champion Dog Agility Off Leash II  
Class Champion Dog Agility Off Leash III  
Reserve Class Champion Dog Agility Off Leash III  
Class Champion Dog Agility Off Leash IV  
Reserve Class Champion Dog Agility Off Leash IV

Class Champion Dog Pre-Novice A Obedience  
Reserve Class Champion Dog Pre-Novice A Obedience  
Class Champion Dog Pre-Novice B Obedience  
Reserve Class Champion Dog Pre-Novice B Obedience  
Class Champion Dog Pre-Novice C Obedience  
Reserve Class Champion Dog Pre-Novice C Obedience  
Class Champion Dog Novice A Obedience  
Reserve Class Champion Dog Novice A Obedience  
Class Champion Dog Novice B Obedience  
Reserve Class Champion Dog Novice B Obedience  
Class Champion Dog Graduate Novice Obedience  
Reserve Class Champion Dog Graduate Novice Obedience  
Class Champion Dog Open A Obedience  
Reserve Class Champion Dog Open A Obedience  
Class Champion Dog Open B Obedience  
Reserve Class Champion Dog Open B Obedience

Class Champion Dog Utility A Obedience  
Reserve Class Champion Dog Utility A Obedience  
Class Champion Dog Utility B Obedience  
Reserve Class Champion Dog Utility B Obedience

Class Champion Dog Rally Level II Off Leash  
Reserve Class Champion Rally Level II Off Leash  
Class Champion Dog Rally Level III Off Leash  
Reserve Class Champion Rally Level III Off Leash

Class Champion Dog Showmanship Pre-School  
Reserve Class Champion Dog Showmanship Pre-School  
Class Champion Dog Showmanship Junior  
Reserve Class Champion Dog Showmanship Junior  
Class Champion Dog Showmanship Intermediate  
Reserve Class Champion Dog Showmanship  
Intermediate  
Class Champion Dog Showmanship Senior  
Reserve Class Champion Dog Showmanship Senior

Grand Champion Dog Agility On Leash  
Reserve Grand Champion Dog Agility On Leash  
Grand Champion Dog Agility Off Leash  
Reserve Grand Champion Dog Agility Off Leash

Grand Champion Dog Pet Class Obedience  
Reserve Grand Champion Dog Pet Class Obedience  
Grand Champion Dog Puppy Class Obedience  
Reserve Grand Champion Dog Puppy Class Obedience  
Grand Champion Dog Pre-Novice Obedience  
Reserve Grand Champion Dog Pre-Novice Obedience  
Grand Champion Dog Novice Obedience  
Reserve Grand Champion Dog Novice Obedience  
Grand Champion Dog Open Obedience  
Reserve Grand Champion Dog Open Obedience  
Grand Champion Dog Utility Obedience  
Reserve Grand Champion Dog Utility Obedience

Grand Champion Dog Rally On Leash  
Reserve Grand Champion Dog Rally On Leash  
Grand Champion Dog Rally Off Leash  
Reserve Grand Champion Dog Rally Off Leash

Grand Champion Dog Showmanship Pre-School  
Reserve Grand Champion Dog Showmanship Pre-School  
Grand Champion Dog Showmanship Junior  
Reserve Grand Champion Dog Showmanship Junior  
Grand Champion Dog Showmanship Intermediate  
Reserve Grand Champion Dog Showmanship  
Intermediate  
Grand Champion Dog Showmanship Senior  
Reserve Grand Champion Dog Showmanship Senior

5. Entries must be made to the superintendent prior to the show.
5. Entries may be judged in only one class. Open class entries will be judged with the 4-H dog show.
6. 4-H manuals and guidelines will be followed.
7. Each entrant must have personally trained and cared for the dog shown.
8. Dogs must be on a leash at all times when on the fairgrounds.
9. Entries must have proof of current rabies, distemper and

Parvo immunizations.

### **Agility**

- 10100 On Leash [Must Also Show in Obedience Class]  
(Limit of 1)
- 10101 Off Leash I [Must Also Show in Obedience Class]  
(Limit of 1)
- 10102 Off Leash II [Must Also Show in Obedience Class]  
(Limit of 1)
- 10103 Off Leash III [Must Also Show in Obedience Class]  
(Limit of 1)
- 10104 Off Leash IV [Must Also Show in Obedience Class]  
(Limit of 1)

### **Obedience**

- 10200 Pet Class [Project Leader approved class] - First year members with first year dog only. (Limit of 1)
- 10201 Puppy Class (Limit of 1)
- 10202 Pre-Novice A - entrant has never shown a dog before and dog has never shown before, all exercises on leash. (Limit of 1)
- 10203 Pre-Novice B - Second year entrant or second year dog only, all exercises on leash. (Limit of 1)
- 10204 Pre-Novice C - Third year entrant or third year dog only, all exercises on leash. (Limit of 1)
- 10205 Novice A - First year entrant with first year dogs off leash, must have passed sub-novice class the previous year, some off leash. (Limit of 1)
- 10206 Novice B - Experienced entrant or experienced dog, the dog has been shown qualified in Novice A previous year. (Limit of 1)
- 10207 Graduate Novice - All exercises off the leash, includes heel on leash, stand for exam [off leash], heel free, drop on recall, long sit [handler out of sight 5 minutes]. (Limit of 1)
- 10208 Open A - Entrant and dogs who have qualified from Advanced or Graduate novice, all exercises off the leash. (Limit of 1)
- 10209 Open B - Entrant and dogs who have qualified or Open A, exercises off the leash. (Limit of 1)
- 10210 Utility A - Entrant with a dog that qualified in Open B, exercises off the leash. (Limit of 1)
- 10211 Utility B - Entrant with a dog that qualified from Utility A. (Limit of 1)

### **Dog Rally**

- 10300 Level I On Leash (Limit of 1)
- 10301 Level II Off Leash (Limit of 1)
- 10302 Level III Off Leash (Limit of 1)

### **Showmanship**

- 10400 Pre-School - Showmanship (Limit of 1)
- 10401 Junior Age 7-9 - Dog Showmanship (Limit of 1)
- 10402 Intermediate Age 10-13 - Dog Showmanship (Limit of 1)
- 10403 Senior Age 14 and Older - Dog Showmanship (Limit of 1)

### **◆ OPEN CLASS AQUARIUM PETS**

1. General rules apply.
2. Pre-entry required.
3. Age Groups [If applicable, professional or special needs

should be noted on the entry tag.]:

Pre-School

Junior Age 7-9

Intermediate Age 10-13

Senior Age 14-18

Adult Age 19-64

Golden Age 65 and Older

4. Awards (CC-0, RCC-0, GC-1, RGC-1):

Grand Champion Aquarium Pets

Reserve Grand Champion Aquarium Pets

5. 4-H Manuals and guidelines will be followed.

6. Open class exhibits will be judged at the same time as 4-H exhibits, but they will not compete against each other.

7. All aquariums are pre-judged during the week before fair. NO aquariums will be judged at fair.

8. Aquarium Pets include fish and reptiles kept in aquariums.

9. Aquariums will be judged on cleanliness, balance and habitat.

10. Pictures will be taken by the Extension Office for a fair display.

13300 Aquarium Pets (Limit of 1)

#### ◆ OPEN CLASS ART

1. General rules apply.

2. No pre-entry required.

3. Age Groups [If applicable, professional or special needs should be noted on the entry tag.]:

Pre-School

Junior Age 7-9

Intermediate Age 10-13

Senior Age 14-18

Adult Age 19-64

Golden Age 65 and Older

4. Awards (CC-0, RCC-0, GC-4, RGC-4):

Grand Champion Art Youth

Reserve Grand Champion Art Youth

Grand Champion Art Adult

Reserve Grand Champion Art Adult

Grand Champion Ceramics Youth

Reserve Grand Champion Ceramics Youth

Grand Champion Ceramics Adult

Reserve Grand Champion Ceramics Adult

5. All exhibits MUST be ready to hung with a wire attached to be properly displayed. If necessary hardware is not attached, it may not be displayed.

6. Exhibitor must have their entry categories clearly marked on the back of the entry tag.

10500 Art (Limit of 4)

10501 Ceramics (Limit of 4)

#### ◆ OPEN CLASS CAT

1. General rules apply.

2. Pre-entry required.

3. Age Groups [If applicable, professional or special needs should be noted on the entry tag.]:

Pre-School

Junior Age 7-9

Intermediate Age 10-13

Senior Age 14-18

Adult Age 19-64

Golden Age 65 and Older

4. Awards (CC-0, RCC-0, GC-1, RGC-1):  
Grand Champion Cat  
Reserve Grand Champion Cat
5. 4-H Manuals and guidelines will be followed.
6. Open class exhibits will be judged at the same time as 4-H exhibits, but they will not compete against each other.
7. All cats are pre-judged during the week before fair. NO cats will be judged at fair.
8. All cats must have proof of rabies and distemper immunization. An immunization sheet is available at the Extension Office must be completed by a veterinarian and presented to the superintendent at the time of judging.
9. Exhibitor must be present when judging occurs.
10. All cats must be groomed by the exhibitor.
11. The cat will be judged on cleanliness, disposition, overall condition.
12. Pictures will be taken by the Extension Office for a fair display.

13400 Registered or Non-Registered Cat (Limit of 1)

#### ◆ OPEN CLASS CRAFTS

1. General rules apply.
2. No pre-entry required.
3. Age Groups [If applicable, professional or special needs should be noted on the entry tag]:  
Pre-School  
Junior Age 7-9  
Intermediate Age 10-13  
Senior Age 14-18  
Adult Age 19-64  
Golden Age 65 and Older
4. Awards (CC-0, RCC-0, GC-2, RGC-2):  
Grand Champion Crafts Youth  
Reserve Grand Champion Crafts Youth  
Grand Champion Crafts Adult  
Reserve Grand Champion Crafts Adult
5. Exhibitor must have their entry categories clearly marked on the back of the entry tag.
6. Items made from pre-constructed kits, mold, instructions, patterns, etc.

10600 Craft (Limit of 2)

10601 Legos/K'Nex From a Kit (Limit of 2)

10602 Legos/K'Nex Original Design (Limit of 2)

10603 Recycled Item (Limit of 2)

#### ◆ OPEN CLASS CROPS

1. General rules apply.
2. No pre-entry required.
3. No age groups.
4. Awards (CC-0, RCC-0, GC-2, RGC-2):  
Grand Champion Crops  
Reserve Grand Champion Crops  
Grand Champion Wheat Show  
Reserve Grand Champion Wheat Show
5. All exhibits must have been grown around Northwest Kansas by the exhibitor during the current season.
6. Name of exhibitor and variety name of the field grown

crops must accompany the exhibit. Advertising materials are not allowed.

7. Field corn exhibits are a 6-stalk bundle with stalks cut at brace root level. Designate hybrid variety, length of season, planting date. Exhibitors are asked to strip husk and tie it back so that the ear may be observed. This should be done after arriving in the exhibit hall.

- 10700 Field Corn - 6 Stalks (Limit of 1)
- 10701 Ear Corn - 6 Ears (Limit of 1)
- 10702 Grain Sorghum - 6 Stalks Any Color (Limit of 1)
- 10703 Grain Sorghum - 6 Heads Any Color (Limit of 1)
- 10704 Forage Sorghum - 6 Stalks (Limit of 1)
- 10705 Pinto Beans - 4" Bundle (Limit of 1)
- 10706 Great Northern Beans - 4" Bundle (Limit of 1)
- 10707 Navy Beans - 4" Bundle (Limit of 1)
- 10708 Soybeans - 4" Bundle (Limit of 1)
- 10709 Alfalfa - 4" Bundle (Limit of 1)
- 10710 Millet - 4" Bundle (Limit of 1)
- 10711 Wheat - 4" Bundle (Limit of 1)
- 10712 Barley - 4" Bundle (Limit of 1)
- 10713 Oats - 4" Bundle (Limit of 1)
- 10714 Sunflowers - 3 Oil Type Stalks (Limit of 1)
- 10715 Sunflowers - 1 Confectionary Stalk (Limit of 1)
- 10716 Sunflowers - 1 Oil Type Head (Limit of 1)
- 10717 Sunflowers - 1 Confectionary Head (Limit of 1)
- 10718 Canola - 2 Plants (Limit of 1)
- 10719 Wheat Show - All entries [8-10 pound samples] must be pre-entered. For the date due to the Extension Office in the Sherman County Courthouse, see Entry and Judging Schedule page. Ribbons recognition for 1st through 10th place. (Limited of 10)

#### ◆ OPEN CLASS FLORICULTURE

1. General rules apply.
2. No pre-entry required.
3. No age groups.
4. Awards (CC-0, RCC-0, GC-1, RGC-1):
  - Grand Champion Floriculture
  - Reserve Grand Champion Floriculture
5. Exhibits are open to anyone wishing to enter except for commercial florists.
6. Entry tags should include exhibitor name, class number and title of class. Please check each flower entry description regarding the size and amount of each specimen entered. Entries with incorrect amount of specimen will not be judged.
7. Vases for floriculture entries will be furnished except for arrangement and house plant exhibits.
8. Leave foliage and stem as long as possible. The flowers' own foliage always adds to the exhibit.
9. House plants container grown plants must have been in exhibitor' possession for at least three months.
10. House plants must be labeled as to variety and care.

- 10800 Baskets - Green House Plant - 1 (Limit of 1)
- 10801 Baskets - Flowering House Plant - 1 (Limit of 1)
- 10802 Baskets - Flowering Hanging Basket -1 (Limit of 1)
- 10803 Baskets - Green Hanging Basket - 1 (Limit of 1)
- 10804 Baskets - Container Gardening (Limit of 1)
- 10805 Annual Garden Flower, Cut Specimen, Single Stem (Limit of 10)

- 10806 Perennial Garden Flower, Cut Specimen, Single Stem (Limit of 10)
- 10807 Tropical - Begonia Tuber - 1 Flower (Limit of 1)
- 10808 Tropical - Bougainvillea - 1 Stem (Limit of 1)
- 10809 Tropical - Hibiscus - 1 Stem (Limit of 1)
- 10810 Tropical - Hibiscus - Perennial - 1 Flower (Limit of 1)
- 10811 Tropical - Hydrangea - 1 Flower (Limit of 1)
- 10812 Tropical - Mexican Heather - 1 Stem (Limit of 1)
- 10813 Tropical - Passion Flower - 1 Flower (Limit of 1)
- 10814 Tropical - Water Lily - 1 Flower (Limit of 1)
- 10815 Tropical - Other - 1 Stem (Limit of 1)
- 10816 Wild Flowers - Kansas Gay Feather - 1 Stem (Limit of 1)
- 10817 Wild Flowers - Golden Rod - 1 Stem (Limit of 1)
- 10818 Wild Flowers - Grass - 3 Stems (Limit of 1)
- 10819 Wild Flowers - Snow-on-the-Mountain - 1 Stem (Limit of 1)
- 10820 Wild Flowers - Wild Rose - 3 Flowers (Limit of 1)
- 10821 Wild Flowers - Other - 1 Stem (Limit of 1)
- 10822 House Plants - Cactus (Limit of 1)
- 10823 House Plants - Succulent (Limit of 1)
- 10824 House Plants - Vining Philodendron (Limit of 1)
- 10825 House Plants - Violet (Limit of 1)
- 10826 House Plants - Other (Limit of 1)
- 10827 Arrangements - A Painter's Palette - Youth Division (Limit of 1)
- 10828 Arrangements - To a Dear Teacher - Youth Division (Limit of 1)
- 10829 Arrangements - Dried Floral - Youth Division (Limit of 1)
- 10830 Arrangements - Sizzling Summer - Adult Division (Limit of 1)
- 10831 Arrangements - Kitchen Bouquet - Adult Division (Limit of 1)
- 10832 Arrangements - Salute to Kansas - Adult Division (Limit of 1)
- 10833 Fairy Garden (Limit of 1)

**◆ OPEN CLASS FOOD PRESERVATION**

1. General rules apply.
2. No pre-entry required.
3. Age Groups [If applicable, professional or special needs should be noted on the entry tag.]:
  - Pre-School
  - Junior Age 7-9
  - Intermediate Age 10-13
  - Senior Age 14-18
  - Adult Age 19-64
  - Golden Age 65 and Older
4. Awards (CC-0, RCC-0, GC-2, RGC-2):
  - Grand Champion Food Preservation Youth
  - Reserve Grand Champion Food Preservation Youth
  - Grand Champion Food Preservation Adult
  - Reserve Grand Champion Food Preservation Adult
5. Food preservation is judged visually without opening the jar so only clear pint or quart size jars should be used.
6. Colored lids/rings will be accepted.
7. Attach entry card to jar with a rubber band. On back of entry card list the following information. Canning Method: Water Bath or Pressure, Process Time & Pressure (psi).



8. Recommended method of processing must be used. Open kettle processed foods will not be accepted. Pickles and sweet spreads must be finished by the water bath process; low acid products must be pressure processed. The label must include the canning method and process time. All food preservation exhibits must be sealed in clean standard jars, half-pint, etc., with two-piece lids. Jars must be sealed when entered. Paraffin on jellies and jams are no longer accepted as a sealing agent.
9. Jellies are to be in standard jelly jars. Preserves, jams and butters may be in standard pint or half-pint jars. Fruits, vegetables and meats may be in pint jars.
10. ALL® “BRING OUT YOUR BEST™” ADULT/YOUTH FOOD PRESERVATION AWARDS presented by: BALL® & KERR® HOME To promote the art of home canning, and to honor adults who excel at the art of home canning, Ball® & Kerr® Home Canning is offering First and Second Place Adult Award categories. Judges will select the two best entries submitted by an adult in Fruit, Vegetable, Pickle and Soft Spread categories canned in Ball® Jars sealed with Ball® Bands with Dome® Lids or Ball® Collection Elite™ Decorative Bands with Dome® Lids, or canned in Kerr® Jars sealed with Kerr® Bands with Self-Sealing® Lids or Ball® Collection Elite™ Decorative Bands with Dome® Lids. In addition, selections of the two best entries submitted by adults in the Soft Spreads category will be limited to entries prepared using one of the Ball® Fruit Jell® Pectins: Regular, No Sugar Needed or Liquid. The entries designated First Place from each category will receive the following: • Two (2) Five Dollar Coupons (\$5.00) for Ball® or Kerr® Home Canning Products and one (1) Three Dollar Coupon (\$3.00) for Ball 100% Natural® Products. The entries designated Second Place from each category will receive the following: • Two (2) Five Dollar Coupons (\$5.00) for Ball® or Kerr® Home Canning Products.

- 10900 Fruits - Apples (Limit of 1)
- 10901 Fruits - Applesauce (Limit of 1)
- 10902 Fruits - Apricots (Limit of 1)
- 10903 Fruits - Berries (Limit of 1)
- 10904 Fruits - Bing Cherries (Limit of 1)
- 10905 Fruits - Red Pitted Cherries (Limit of 1)
- 10906 Fruits - Peaches (Limit of 1)
- 10907 Fruits - Pears (Limit of 1)
- 10908 Fruits - Blue Plums (Limit of 1)
- 10909 Fruits - Red Plums (Limit of 1)
- 10910 Fruits - Salad Fruit Mixture (Limit of 1)
- 10911 Fruits - Salad Grapes (Limit of 1)
- 10912 Vegetables - Asparagus (Limit of 1)
- 10913 Vegetables - Green Beans (Limit of 1)
- 10914 Vegetables - Wax Beans (Limit of 1)
- 10915 Vegetables - Beets (Limit of 1)
- 10916 Vegetables - Carrots (Limit of 1)
- 10917 Vegetables - Corn (Limit of 1)
- 10918 Vegetables - Peas (Limit of 1)
- 10919 Vegetables - Pumpkin (Limit of 1)
- 10920 Vegetables - Rhubarb (Limit of 1)
- 10921 Vegetables - Sauerkraut (Limit of 1)
- 10922 Vegetables - Soup Mixture of Vegetables (Limit of 1)

- 10923 Vegetables - Tomatoes (Limit of 1)
- 10924 Meats - Beef (Limit of 1)
- 10925 Meats - Chicken (Limit of 1)
- 10926 Meats - Mincemeat (Limit of 1)
- 10927 Meats - Pork (Limit of 1)
- 10928 Collection - 6 Vegetables (Limit of 1)
- 10929 Collection - 1 Fruit and 1 Non-acid Vegetable (Limit of 1)
- 10930 Collection - 3 Meats [Specify Kind] (Limit of 1)
- 10931 Collection - 1 Fruit, 1 Non-acid Vegetable, and 1 Meat (Limit of 1)
- 10932 Collection - 6 Fruit (Limit of 1)
- 10933 Jelly - Apple (Limit of 1)
- 10934 Jelly - Crabapple (Limit of 1)
- 10935 Jelly - Current (Limit of 1)
- 10936 Jelly - Grape (Limit of 1)
- 10937 Jelly - Red Plum (Limit of 1)
- 10938 Jelly - Wild Plum (Limit of 1)
- 10939 Jelly - Strawberry (Limit of 1)
- 10940 Jelly - Berry (Limit of 1)
- 10941 Jelly - Peach (Limit of 1)
- 10942 Jelly - Apricot (Limit of 1)
- 10943 Jelly - Gooseberry (Limit of 1)
- 10944 Jelly - Mint (Limit of 1)
- 10945 Jelly - Chokecherry (Limit of 1)
- 10946 Jelly - Cherry (Limit of 1)
- 10947 Jelly - Jalapeno (Limit of 1)
- 10948 Jelly - Other (Limit of 1)
- 10949 Preserves - Apricot (Limit of 1)
- 10950 Preserves - Cherry (Limit of 1)
- 10951 Preserves - Peach (Limit of 1)
- 10952 Preserves - Pear (Limit of 1)
- 10953 Preserves - Strawberry (Limit of 1)
- 10954 Preserves - Red Tomato (Limit of 1)
- 10955 Jams - Peach (Limit of 1)
- 10956 Jams - Pear (Limit of 1)
- 10957 Jams - Plum (Limit of 1)
- 10958 Jams - Strawberry (Limit of 1)
- 10959 Jams - Other (Limit of 1)
- 10960 Butters - Apple (Limit of 1)
- 10961 Butters - Peach (Limit of 1)
- 10962 Butters - Pear (Limit of 1)
- 10963 Butters - Plum (Limit of 1)
- 10964 Butters - Grape (Limit of 1)
- 10965 Collection - 6 Different Jellies [Labeled] (Limit of 1)
- 10966 Collection - 4 Different Preserves [Labeled] (Limit of 1)
- 10967 Collection - 4 different Jams [Labeled] (Limit of 1)
- 10968 Collection - 4 Different Butters [Labeled] (Limit of 1)
- 10969 Pickles - Beets, Pickled (Limit of 1)
- 10970 Pickles - Bread and Butter (Limit of 1)
- 10971 Pickles - Sweet Cucumber (Limit of 1)
- 10972 Pickles - Sour Cucumber (Limit of 1)
- 10973 Pickles - Mixed Hot - 3 or More Vegetables (Limit of 1)
- 10974 Pickles - Dill (Limit of 1)
- 10975 Pickles - Peach (Limit of 1)
- 10976 Pickles - Red Cinnamon (Limit of 1)
- 10977 Pickles - Apple (Limit of 1)
- 10978 Pickles - Watermelon (Limit of 1)
- 10979 Pickles - Zucchini (Limit of 1)

- 10980 Pickles - Okra (Limit of 1)
- 10981 Pickles - Other (Limit of 1)
- 10982 Relish - Cucumber (Limit of 1)
- 10983 Relish - Piccalilli (Limit of 1)
- 10984 Relish - Zucchini (Limit of 1)
- 10985 Relish - Corn (Limit of 1)
- 10986 Relish - Beet (Limit of 1)
- 10987 Relish - Salsa (Limit of 1)
- 10988 Relish - Other (Limit of 1)
- 10989 Miscellaneous (Limit of 1)
- 10990 Collection - 3 Different Relishes [Labeled] (Limit of 1)
- 10991 Collection - Meal Collection - 1 of Each [Meat, Vegetable, Fruit, Pickle, Relish, Jelly, or Jam] (Limit of 1)
- 10992 Collection - 3 Different Pickles - 1 Fruit, 1 Vegetable, 1 Relish [Labeled] (Limit of 1)
- 10993 Collection - 6 Different Pickles [Labeled] (Limit of 1)
- 10994 Dehydrated Foods (Limit of 1)

◆ **OPEN CLASS FOODS**

1. General rules apply.
2. No pre-entry required.
3. Age Groups [If applicable, professional or special needs should be noted on the entry tag.]:  
 Pre-School  
 Junior Age 7-9  
 Intermediate Age 10-13  
 Senior Age 14-18  
 Adult Age 19-64  
 Golden Age 65 and Older
4. Awards (CC-0, RCC-0, GC-2, RGC-2):  
 Grand Champion Foods Youth  
 Reserve Grand Champion Foods Youth  
 Grand Champion Foods Adult  
 Reserve Grand Champion Foods Adult
5. No prepared mixes, icing or commercial bread or roll mix permitted unless otherwise stated. All exhibits must be prepared by the exhibitor.
6. Entries shall be displayed on foil-covered cardboard or on paper plates and slipped into a food plastic bag. Baked products should be removed from the pan and placed on paper plates or cardboard; otherwise, exhibit in a disposable container. Pans will not be returned (example: glass pie plate).
7. All food preparation entries will be considered the property of the fair board. These entries except for a display sample will be sold at the annual fair board food sale. Sale will take place in the Open Class Foods Department in the Ag Building after the food judging is over and last until food is gone. All proceeds go to aid the fair board.
8. A single entry cannot be entered as part of a collection. Articles entered as collections must be attached together.
9. For food safety purposes, any food with custard and cream cheese type fillings and frostings, flavored oils, "canned" bread or bread cakes in a jar, or food requiring refrigeration will not be accepted.
10. Cakes should be exhibited in an upright position with crust showing, except for those cakes made with special designs such as bundt cakes.

11. Decorate dummies (pans, styrofoam, etc.) Must be less than 24" in height.
12. The board that the cake is placed on must not exceed 15".
13. Pies with only 2 crust, 1 crust, or crumb crust - any flavor. No meringues or cream pies.

- 11000 Yeast Breads [Loaf Pan Size 9x5x3] (Limit of 2)
- 11001 Produced in Bread Machine (Limit of 2)
- 11002 Yeast Rolls [White, Wheat, Graham, Oat, Rye] - 5 (Limit of 2)
- 11003 Yeast Specialty [Cinnamon, Tea Ring, Coffee Cake] - 5 (Limit of 2)
- 11004 Quick Breads (Limit of 2)
- 11005 Muffins [Any Flavor] - 5 (Limit of 2)
- 11006 Biscuits - 5 (Limit of 2)
- 11007 Cake [No Frosting] Foam, Pound, Bundt [8x8 Min Size] (Limit of 2)
- 11008 Cupcake [Any Flavor] - 5 (Limit of 2)
- 11009 Decorated Cake (Limit of 2)
- 11010 Cookies - 5(Limit of 2)
- 11011 Brownies or Bar - 5[Baked in Pan, Cut in Squares] (Limit of 2)
- 11012 Candy (Limit of 2)
- 11013 Pie [2 Crust, 1 Crust, or Crumb Crust] (Limit of 2)

**◆ OPEN CLASS GARDEN**

1. General rules apply.
2. No pre-entry required.
3. No age groups.
4. Awards (CC-0, RCC-0, GC-1, RGC-1):  
Grand Champion Garden  
Reserve Grand Champion Garden
5. All exhibits must have been grown around Northwest Kansas by the exhibitor during the current season.
6. One item from each exhibit can be cut at the judge's discretion. All root crops should be brushed or washed, but not peeled. Any leafy vegetable entry including fresh herbs should be displayed in a container of water to preserve freshness. A complete guide to garden exhibit selection rules is available at the extension office.

- 11100 Garden Display [At least 7 Different Vegetables Attractively Displayed in Basket or Box] (Limit of 1)
- 11101 Beans - 10 Green (Limit of 1)
- 11102 Beans - 10 Purple (Limit of 1)
- 11103 Beans - 10 Wax (Limit of 1)
- 11104 Beans - 10 Lima (Limit of 1)
- 11105 Broccoli - 1 Head (Limit of 1)
- 11106 Beets - 5 (Limit of 1)
- 11107 Cabbage - 1 Head (Limit of 1)
- 11108 Cantaloupe - 1 (Limit of 1)
- 11109 Carrots - 5 (Limit of 1)
- 11110 Cucumbers - 5 Picklers (Limit of 1)
- 11111 Cucumbers - 5 Slicers, Regular or Burpless (Limit of 1)
- 11112 Eggplant - 1 (Limit of 1)
- 11113 Garlic - 3 Bulbs (Limit of 1)
- 11114 Gourds - 2 (Limit of 1)
- 11115 Herbs-Fresh - Selection of 3 in Water [Labeled] (Limit of 1)
- 11116 Herbs-dried - Selection of 5 [Labeled] (Limit of 1)
- 11117 Kohlrabi - 3 (Limit of 1)

- 11118 Leeks - 2 (Limit of 1)
- 11119 Leaf Lettuce in Water (Limit of 1)
- 11120 Okra - 5 (Limit of 1)
- 11121 Onions - 5 Green (Limit of 1)
- 11122 Onions - 5 Red (Limit of 1)
- 11123 Onions - 5 White (Limit of 1)
- 11124 Onions - 5 Yellow (Limit of 1)
- 11125 Parsnips - 5 (Limit of 1)
- 11126 Peanuts - 1 Plant (Limit of 1)
- 11127 Peas - 10 Sugar Snap (Limit of 1)
- 11128 Peas - 10 Snow Pods (Limit of 1)
- 11129 Peas - 10 Regular (Limit of 1)
- 11130 Peas - 10 Black Eye (Limit of 1)
- 11131 Peppers - 3 Green, Yellow, or Red Bell (Limit of 1)
- 11132 Peppers - 5 Jalapeno (Limit of 1)
- 11133 Peppers - 5 Anaheim (Limit of 1)
- 11134 Peppers - 5 Cayenne (Limit of 1)
- 11135 Peppers - 3 Banana (Limit of 1)
- 11136 Peppers - 5 Other Hot (Limit of 1)
- 11137 Popcorn - 3 Ears (Limit of 1)
- 11138 Potatoes - 5 Red (Limit of 1)
- 11139 Potatoes - 5 White (Limit of 1)
- 11140 Potatoes - 5 Yukon Gold (Limit of 1)
- 11141 Potatoes - 5 Sweet (Limit of 1)
- 11142 Pumpkin - 1 Largest (Limit of 1)
- 11143 Pumpkin - 1 Pie (Limit of 1)
- 11144 Radishes - 5 Red (Limit of 1)
- 11145 Radishes - 5 White (Limit of 1)
- 11146 Rhubarb - 3 Stalks (Limit of 1)
- 11147 Spinach - Small Bunch in Water (Limit of 1)
- 11148 Swiss Chard - Small Bunch in Water (Limit of 1)
- 11149 Squash - 1 Green Zucchini (Limit of 1)
- 11150 Squash - 1 Yellow Zucchini (Limit of 1)
- 11151 Squash - 1 Scallop (Limit of 1)
- 11152 Squash - 1 Butternut (Limit of 1)
- 11153 Squash - 1 Acorn (Limit of 1)
- 11154 Squash - Yellow Straight Neck (Limit of 1)
- 11155 Squash - 1 Yellow Crookneck (Limit of 1)
- 11156 Squash - 1 Hubbard (Limit of 1)
- 11157 Squash - 1 Spaghetti (Limit of 1)
- 11158 Squash - 1 Other Summer (Limit of 1)
- 11159 Squash - 1 Other Winter (Limit of 1)
- 11160 Sweet Corn - 5 Ears (Limit of 1)
- 11161 Tomatoes - 3 Red (Limit of 1)
- 11162 Tomatoes - 3 Green (Limit of 1)
- 11163 Tomatoes - 5 Red 4th of July (Limit of 1)
- 11164 Tomatoes - 10 Red Cherry (Limit of 1)
- 11165 Tomatoes - 10 Green Cherry (Limit of 1)
- 11166 Tomatillo - 10 Husk Tomatoes (Limit of 1)
- 11167 Turnips - 5 (Limit of 1)
- 11168 Watermelon - 1(Limit of 1)
- 11169 Sunflower - 1 Tame Head (Limit of 1)
- 11170 Other Vegetable (Limit of 1)
- 11171 Apples - 5 Regular (Limit of 1)
- 11172 Apples - 5 Crab (Limit of 1)
- 11173 Apricots - 5(Limit of 1)
- 11174 Grapes - 1 Bunch (Limit of 1)
- 11175 Mulberries - Small Plate (Limit of 1)
- 11176 Peaches - 5 (Limit of 1)
- 11177 Pears - 5 (Limit of 1)
- 11178 Plums - 5 Purple, Red, or Yellow Tame (Limit of 1)
- 11179 Plums - 10 Sandhill or Wild (Limit of 1)

- 11180 Cherries - 10 Pie (Limit of 1)
- 11181 Cherries - 10 Sweet (Limit of 1)
- 11182 Cherries - 1 Branch (Limit of 1)
- 11183 Strawberries - 10 (Limit of 1)
- 11184 Walnuts - 10 English (Limit of 1)
- 11185 Walnuts - 10 Black (Limit of 1)
- 11186 Pecans - 10 (Limit of 1)
- 11187 Nuts - 10 Other (Limit of 1)
- 11188 Blackberries - 10 (Limit of 1)
- 11189 Raspberries - 10 (Limit of 1)
- 11190 Other Berries - 10 (Limit of 1)

**◆ OPEN CLASS HAND PET**

1. General rules apply.
2. Pre-entry required.
3. Age Groups [If applicable, professional or special needs should be noted on the entry tag.]:  
 Pre-School  
 Junior Age 7-9  
 Intermediate Age 10-13  
 Senior Age 14-18  
 Adult Age 19-64  
 Golden Age 65 and Older
4. Awards (CC-0, RCC-0, GC-1, RGC-1):  
 Grand Champion Hand Pet  
 Reserve Grand Champion Hand Pet
5. 4-H Manuals and guidelines will be followed.
6. Open class exhibits will be judged at the same time as 4-H exhibits, but they will not compete against each other.
7. All hand pets are pre-judged during the week before fair. NO hand pets will be judged at fair.
8. A hand pet may be a bird, guinea pig, hamster or gerbil. NO mice or rats are permitted because of the diseases these species carry.
9. Hand pets must be shown in cages and the exhibitor must be present during judging.
10. A hand pet will be judged on its overall condition, and the appearance of its cage.
11. Pictures will be taken by the Extension Office for a fair display.

- 13500 Hand Pet (Limit of 1)

**◆ OPEN CLASS NEEDLEWORK**

1. General rules apply.
2. No pre-entry required.
3. Age Groups [If applicable, professional or special needs should be noted on the entry tag.]:  
 Pre-School  
 Junior Age 7-9  
 Intermediate Age 10-13  
 Senior Age 14-18  
 Adult Age 19-64  
 Golden Age 65 and Older
4. Awards (CC-18, RCC-18, GC-1, RGC-1):  
 Class Champion Needlework  
 Reserve Class Champion Needlework  
 Grand Champion Needlework  
 Reserve Grand Champion Needlework
5. All exhibits must be the work of the exhibitor and made in the year since the last fair.
6. Articles entered as a collection cannot compete for

another premium. They should be firmly attached together or mounted on the same card.

7. All articles entered for competition must be finished.
8. All articles entered for competition must be clean or will be rejected.
9. The management will police the building both night and day and give proper care to articles, but will not be responsible for loss or damage.
10. Pictures should be framed and wired for hanging.

- 11200 Needlework - Embroidery (Limit of 2)
- 11201 Needlework - Cross Stitch (Limit of 2)
- 11202 Needlework - Crochet (Limit of 2)
- 11203 Needlework - Knitting (Limit of 2)
- 11204 Needlework - Quilt [Hand Quilted] (Limit of 2)
- 11205 Needlework - Quilt [Machine Quilted] (Limit of 2)
- 11206 Needlework - Quilt [Tied] (Limit of 2)
- 11207 Needlework - Family Heirloom (Limit of 2)
- 11208 Needlework - Miscellaneous (Limit of 2)
- 11209 Needlework - Afghans (Limit of 2)
- 11210 Needlework - Rugs (Limit of 2)
- 11211 Needlework - Textile Paint (Limit of 2)
- 11212 Needlework - Other Items Not Listed (Limit of 2)
- 11213 Sewing - Clothing Item (Limit of 2)
- 11214 Sewing - Garment (Limit of 2)
- 11215 Sewing - 2-Piece Outfit (Limit of 2)
- 11216 Sewing - Miscellaneous (Limit of 2)
- 11217 Sewing - Recycled Item (Limit of 2)

#### ◆ OPEN CLASS PHOTOGRAPHY

1. General rules apply.
2. No pre-entry required.
3. Age Groups [If applicable, professional or special needs should be noted on the entry tag.]:
  - Pre-School
  - Junior Age 7-9
  - Intermediate Age 10-13
  - Senior Age 14-18
  - Adult Age 19-64
  - Golden Age 65 and Older
4. Awards (CC-2, RCC-2, GC-4, RGC-4):
  - Class Champion Photography
  - Reserve Class Champion Photography
  - Grand Champion Photography Black & White Youth
  - Reserve Grand Champion Photography Black & White Youth
  - Grand Champion Photography Black & White Adult
  - Reserve Grand Champion Photography Black & White Adult
  - Grand Champion Photography Color Youth
  - Reserve Grand Champion Photography Color Youth
  - Grand Champion Photography Color Adult
  - Reserve Grand Champion Photography Color Adult
5. Amateur photographers are eligible for exhibiting in this division. Photos exhibited must have been the work of the current year and taken by the exhibitor.
6. Exhibitors may enter photos on any subject matter.
7. Photos are to be mounted across the narrow (11") dimension of an 11" x 12.5" sheet of white or cream studio mount. Do not use form core board. Photos mounted on poster board will not be displayed.
8. Remove white border from the enlargement before

mounting. All photos must be no larger than 8" x 10" and no smaller than 7" x 9", after trimming.

9. Photos must be mounted with the top edge of the print 1" below the top of the mount. The sides of the print must be equal distance from the two sides of the mount. Refer to photography mounting diagram in the appendix.
10. A permanent mount must be made by using photographic adhesive. You can purchase your mounting board at the Extension office.
11. No lettering is permitted on the front of the mount or on the photo, only on the form provided. No underlay's or borders are to be used. No contact prints on front of mount.
12. To protect exhibits from dust and moisture, place photos in a crystal glassine bag that can be purchased at the extension office. Do not use ziplock bags.
13. After your photo is mounted and placed in the glassine bag, attach your entry card to the outside with a paper clip.
14. Photos will not be accepted if they are framed. Please bring your photos mounted and ready for display.
15. All open class photography will be displayed with the 4-H photography, but they will not compete against each other.

11300 Black and White Photographs (Limit of 4)

11301 Color Photographs (Limit of 4)

#### ◆ OPEN CLASS SPACE TECH

1. General rules apply.
2. No pre-entry required.
3. Age Groups [If applicable, professional or special needs should be noted on the entry tag.]:
  - Pre-School
  - Junior Age 7-9
  - Intermediate Age 10-13
  - Senior Age 14-18
  - Adult Age 19-64
  - Golden Age 65 and Older
4. Awards (CC-0, RCC-0, GC-1, RGC-1):
  - Grand Champion Space Tech
  - Reserve Grand Champion Space Tech
5. All exhibits must be accompanied by the plan, blueprint, drawing or sketch, etc. used for construction.
6. Designate if the article is original or kit construction.

11400 Rocket Made From Kit [Include Plans] (Limit of 1)

11401 Rocket Designed by Exhibitor, Not Merely  
Modification of Existing Kit [Include Plans] (Limit  
of 1)

#### ◆ OPEN CLASS WOODWORKING

1. General rules apply.
2. No pre-entry required.
3. Age Groups [If applicable, professional or special needs should be noted on the entry tag.]:
  - Pre-School
  - Junior Age 7-9
  - Intermediate Age 10-13
  - Senior Age 14-18
  - Adult Age 19-64
  - Golden Age 65 and Older



4. Awards (CC-0, RCC-0, GC-1, RGC-1):  
Grand Champion Woodworking  
Reserve Grand Champion Woodworking
5. All exhibits must be accompanied by the plan, blueprint, drawing or sketch, etc. used for construction.
6. Designate if the article is original or kit construction.

- 11500 Woodworking Article for Farm or Shop Use (Limit of 3)  
 11501 Lawn Furniture (Limit of 3)  
 11502 Household Furniture (Limit of 3)  
 11503 Other Woodworking Articles Not Included in Above Classes [example: bird houses& feeders, knife & key racks, bread boards, wooden cars, etc.] (Limit of 3)

◆ **OPEN CLASS HORSE SHOW**

1. General rules apply.
2. Pre-entry required.
3. Age Groups [If applicable, professional or special needs should be noted on the entry tag.]:  
Pre-School  
Junior Age 7-9  
Intermediate Age 10-13  
Senior Age 14-18  
Adult Age 19-64  
Golden Age 65 and Older
4. Awards (CC-85, RCC-85, GC-18, RGC-18):  
Class Champion Horse Halter  
Reserve Class Champion Horse Halter

Class Champion Horse Performance  
 Reserve Class Champion Horse Performance  
 Class Champion Horse Speed  
 Reserve Class Champion Horse Speed

Class Champion Horse Versatility  
 Reserve Class Champion Horse Versatility

Grand Champion Horse Halter Mare  
 Reserve Grand Champion Horse Halter Mare  
 Grand Champion Horse Halter Gelding  
 Reserve Grand Champion Horse Halter Gelding

Grand Champion Performance Junior  
 Reserve Grand Champion Performance Junior  
 Grand Champion Performance Intermediate  
 Reserve Grand Champion Performance Intermediate  
 Grand Champion Performance Senior  
 Reserve Grand Champion Performance Senior  
 Grand Champion Performance Adult  
 Reserve Grand Champion Performance Adult  
 Grand Champion Performance Golden Age  
 Reserve Grand Champion Performance Golden Age  
 Grand Champion Speed Junior  
 Reserve Grand Champion Speed Junior  
 Grand Champion Speed Intermediate  
 Reserve Grand Champion Speed Intermediate  
 Grand Champion Speed Senior  
 Reserve Grand Champion Speed Senior  
 Grand Champion Speed Adult  
 Reserve Grand Champion Speed Adult  
 Grand Champion Speed Golden Age

Reserve Grand Champion Speed Golden Age

Grand Champion Horse Showmanship Junior  
Reserve Grand Champion Horse Showmanship Junior  
Grand Champion Horse Showmanship Intermediate  
Reserve Grand Champion Horse Showmanship  
Intermediate  
Grand Champion Horse Showmanship Senior  
Reserve Grand Champion Horse Showmanship Senior  
Grand Champion Horse Showmanship Adult  
Reserve Grand Champion Horse Showmanship Adult  
Grand Champion Horse Showmanship Golden Age  
Reserve Grand Champion Horse Showmanship Golden  
Age

Grand Champion Horse Versatility

Reserve Grand Champion Horse Versatility

5. Current Health Certificate and Coggins will be verified at registration.
6. Registration closes 30 minutes before the show starts. No exceptions.
7. Horses are shown at the owner's risk.
8. A single horse may not be entered or ridden in the same age division.
9. Stallions only may show in the weanling class. No other stallions allowed on grounds.
10. All horses must be on the grounds 30 minutes prior to the class entered.

### **Halter Class**

1. Shown by breed only if three or more of a breed are entered in a class.
2. Stock is defined as a horse of a type that is well suited for working with livestock, particularly cattle, to include the American Quarter Horse, American Paint Horse, Appaloosa, or Australian Stock Horse, as well breeds or types of light riding horse of a phenotype. Among breeds with stock horse-type representatives include, Arabian, Morab, Morgan, Mustang, Pony of America, Quarab.
3. Non-Stock is defined as a horse of a type that is not usually suited for working with livestock but has other attributes, to include but not limited to Pony Breeds, Draft Horse Breeds, and Gated Horse Breeds.

11600 Stock Weanling Mares (Limit of 1)

11601 Stock Junior Mares (Limit of 1)

11602 Stock Senior Mares (Limit of 1)

11603 Non-Stock Weanling Mares (Limit of 1)

11604 Non-Stock Junior Mares (Limit of 1)

11605 Non-Stock Senior Mares (Limit of 1)

11606 Stock Weanling Geldings/Stallions (Limit of 1)

11607 Stock Junior Geldings (Limit of 1)

11608 Stock Senior Geldings (Limit of 1)

11609 Non-Stock Weanling Geldings/Stallions (Limit of 1)

11610 Non-Stock Junior Geldings (Limit of 1)

11611 Non-Stock Senior Geldings (Limit of 1)

11612 Walk/Trot (Limit of 1)

11613 Lead Line - Rider 6 Years Old (Limit of 1)

### **Performance**

1. Scoring, patterns, performance will be those in the "Handbook for Kansas 4-H Horse Shows and Events".

2. The judge will divide the placing as follows: Blue, Red, White. Placing will not follow the “Kansas 4-H Horse Show rule Book”, instead will follow those of the Northwest Kansas District Free Fair.
3. Only stock western pleasure class applies toward overall scoring.
4. There is a 5 second penalty for each pole or barrel tipped over during the competition.

- 11700 Junior Age 7-9 - Bareback Equitation (Limit of 1)
- 11701 Intermediate Age 10-13 - Bareback Equitation (Limit of 1)
- 11702 Senior Age 14-18 - Bareback Equitation (Limit of 1)
- 11703 Adult Age 19-64 - Bareback Equitation (Limit of 1)
- 11704 Golden Age 65 year and Older - Bareback Equitation
- 11705 Junior Age 7-9 - English Equitation (Limit of 1)
- 11706 Intermediate Age 10-13 - English Equitation (Limit of 1)
- 11707 Senior Age 14-18 - English Equitation (Limit of 1)
- 11708 Adult Age 19-64 - English Equitation (Limit of 1)
- 11709 Golden Age 65 year and Older - English Equitation
- 11710 Junior Age 7-9 - English Pleasure (Limit of 1)
- 11711 Intermediate Age 10-13 - English Pleasure (Limit of 1)
- 11712 Senior Age 14-18 - English Pleasure (Limit of 1)
- 11713 Adult Age 19-64 - English Pleasure (Limit of 1)
- 11714 Golden Age 65 year and Older - English Pleasure (Limit of 1)
- 11715 Junior Age 7-9 - Hunter Over Fences (Limit of 1)
- 11716 Intermediate Age 10-13 - Hunter Over Fences (Limit of 1)
- 11717 Senior Age 14-18 - Hunter Over Fences (Limit of 1)
- 11718 Adult Age 19-64 - Hunter Over Fences (Limit of 1)
- 11719 Golden Age 65 year and Older - Hunter Over Fences
- 11720 Junior Age 7-9 - Western Pleasure (Limit of 1)
- 11721 Intermediate Age 10-13 - Western Pleasure (Limit of 1)
- 11722 Senior Age 14-18 - Western Pleasure (Limit of 1)
- 11723 Adult Age 19-64 - Western Pleasure (Limit of 1)
- 11724 Golden Age 65 year and Older - Western Pleasure (Limit of 1)
- 11725 Junior Age 7-9 - Non-Stock Western Pleasure (Limit of 1)
- 11726 Intermediate Age 10-13 - Non-Stock Western Pleasure (Limit of 1)
- 11727 Senior Age 14-18 - Non-Stock Western Pleasure (Limit of 1)
- 11728 Adult Age 19-64 - Non-Stock Western Pleasure (Limit of 1)
- 11729 Golden Age 65 year and Older - Non-Stock Western Pleasure (Limit of 1)
- 11730 Junior Age 7-9 - Western Horsemanship (Limit of 1)
- 11731 Intermediate Age 10-13 - Western Horsemanship (Limit of 1)
- 11732 Senior Age 14-18 - Western Horsemanship (Limit of 1)
- 11733 Adult Age 19-64 - Western Horsemanship (Limit of 1)
- 11734 Golden Age 65 year and Older - Western Horsemanship (Limit of 1)
- 11735 Junior Age 7-9 - Reining (Limit of 1)
- 11736 Intermediate Age 10-13 - Reining (Limit of 1)

- 11737 Senior Age 14-18 - Reining (Limit of 1)
- 11738 Adult Age 19-64 - Reining (Limit of 1)
- 11739 Golden Age 65 year and Older - Reining (Limit of 1)
- 11740 Junior Age 7-9 - Pole Bending (Limit of 1)
- 11741 Intermediate Age 10-13 - Pole Bending (Limit of 1)
- 11742 Senior Age 14-18 - Pole Bending (Limit of 1)
- 11743 Adult Age 19-64 - Pole Bending (Limit of 1)
- 11744 Golden Age 65 year and Older - Pole Bending (Limit of 1)
- 11745 Junior Age 7-9 - Barrel Racing (Limit of 1)
- 11746 Intermediate Age 10-13 - Barrel Racing (Limit of 1)
- 11747 Senior Age 14-18 - Barrel Racing (Limit of 1)
- 11748 Adult Age 19-64 - Barrel Racing (Limit of 1)
- 11749 Golden Age 65 year and Older - Barrel Racing (Limit of 1)
- 11750 Junior Age 7-9 - Flags (Limit of 1)
- 11751 Intermediate Age 10-13 - Flags (Limit of 1)
- 11752 Senior Age 14-18 - Flags (Limit of 1)
- 11753 Adult Age 19-64 - Flags (Limit of 1)
- 11754 Golden Age 65 year and Older - Flags (Limit of 1)
- 11755 Junior Age 7-9 - Trail (Limit of 1)
- 11756 Intermediate Age 10-13 - Trail (Limit of 1)
- 11757 Senior Age 14-18 - Trail (Limit of 1)
- 11758 Adult Age 19-64 - Trail (Limit of 1)
- 11759 Golden Age 65 year and Older - Trail (Limit of 1)
- 11760 Junior Age 7-9 - Working Ranch Horse (Limit of 1)
- 11761 Intermediate Age 10-13 - Working Ranch Horse (Limit of 1)
- 11762 Senior Age 14-18 - Working Ranch Horse (Limit of 1)
- 11763 Adult Age 19-64 - Working Ranch Horse (Limit of 1)
- 11764 Golden Age 65 year and Older - Working Ranch Horse (Limit of 1)

### **Showmanship**

- 11800 Junior Age 7-9 - Horse Showmanship (Limit of 1)
- 11801 Intermediate Age 10-13 - Horse Showmanship (Limit of 1)
- 11802 Senior Age 14-18 - Horse Showmanship (Limit of 1)
- 11803 Adult Age 19-64 - Horse Showmanship (Limit of 1)
- 11804 Golden Age 65 year and Older - Horse Showmanship (Limit of 1)

### **Versatility**

- 11900 Versatility (Limit of 1)

### **◆ OPEN CLASS LIVESTOCK**

1. General rules apply.
2. Pre-entry required.
3. Age Groups [If applicable, professional or special needs should be noted on the entry tag.]:
  - Pre-School
  - Junior Age 7-9
  - Intermediate Age 10-13
  - Senior Age 14-18
  - Adult Age 19-64
  - Golden Age 65 and Older
4. Awards (CC-0, RCC-0, GC-13, RGC-13):
  - Grand Champion Breeding Beef
  - Reserve Grand Champion Breeding Beef
  - Grand Champion Breeding Goat

Reserve Grand Champion Breeding Goat  
 Grand Champion Breeding Sheep  
 Reserve Grand Champion Breeding Sheep  
 Grand Champion Breeding Swine  
 Reserve Grand Champion Breeding Swine  
 Grand Champion Bucket Calf  
 Reserve Grand Champion Bucket Calf  
 Grand Champion Dairy Beef  
 Reserve Grand Champion Dairy Beef  
 Grand Champion Dairy Goat  
 Reserve Grand Champion Dairy Goat  
 Grand Champion Market Beef  
 Reserve Grand Champion Market Beef  
 Grand Champion Market Goat  
 Reserve Grand Champion Market Goat  
 Grand Champion Market Sheep  
 Reserve Grand Champion Market Sheep  
 Grand Champion Market Swine  
 Reserve Grand Champion Market Swine  
 Grand Champion Poultry  
 Reserve Grand Champion Poultry  
 Grand Champion Rabbit  
 Reserve Grand Champion Rabbit

6. The livestock shows will be a no fit show, "Blow and Show". No fit, at the Northwest Kansas District Free Fair is defined as using no adhesive, glue, paint, creams, or powder products. Anything used to alter or enhance an animal's performance or look is illegal. Animals using show products will not be allowed to enter the show ring.
7. The superintendents will assign stalls and pens and offer supervision of the livestock exhibits. All animals must be housed in barns. Bedding must be used in pens or stalls except in the beef barn which is bedded in sand. Bedding will be furnished one time.
8. Any exhibitor not providing feed and water for their animal during the fair will forfeit all prize money and/or awards.
9. Livestock must be stalled 2 hours prior to show time and are free to leave after the show. All market livestock will be entered and weighed at a specified time (see entry and judging schedule page). Animals should be clean and free of debris.
10. Registration papers must be presented or proof of application for registry for animals entered in purebred classes.
11. All animals must be owned by the exhibitor. All livestock must be shown by the owner unless the superintendent grants permission for a representative to take the place of the owner.
12. Each exhibitor must care for and groom his or her own animal and may use only the assistance of a family member. No hired professional groomers will be allowed. This rule will be strictly enforced and any exhibitor violating it will have their animal in questions eliminated from competition.
13. Animals may compete as an individual and/or component of a group.
14. Exhibitors must maintain and keep their stalls clean or forfeit any prize money. Stalls must be cleaned after removing animals when leaving grounds.
15. All animals are subject to examination by the exhibition staff or their representatives, and shall be free of clinical

signs of infectious or contagious disease.

16. Pee Wees are recommended to be two years old or older and can manage in the ring by themselves.

### **Breeding Beef**

1. Any breed or cross breeds will be eligible to compete.
2. Upon the decision of the show superintendent entries will be placed in classes by age with the day of judging being the base date.
3. All beef must be penned in the designated areas.
4. All beef exhibits must be shown haltered.

12000 Breeding Heifer 0-24 Months (Limit of 2)

12001 Bull Calf (Limit of 2)

12002 Heifer Calf (Limit of 2)

12003 Cow and Calf (Limit of 2)

### **Breeding Goat**

1. Any breed or cross breeds will be eligible to compete.
2. Upon the decision of the show superintendent entries will be placed in classes by age with the day of judging being the base date.
3. All goats must be penned in the designated areas.
4. Goats must be shown with all four feet on the ground. Exhibitors may use a collar, a collar with a short lead, or a halter when showing. Medium (3mm or smaller) pinch collar will be allowed.
5. No bucks of any age will be allowed on the grounds. Only does can show.
6. Horns should be tipped and rounded.
7. Caseous Lymphdenitis: All goats must be inspected and have no visible signs of this condition.

12100 Junior Doe 0-6 Months (Limit of 2)

12101 Intermediate Doe 6-12 Months (Limit of 2)

12102 Yearling Doe 12-24 Months (Limit of 2)

12103 Senior Doe 24-36 Months (Limit of 2)

12104 Senior Doe 36 Months Plus (Limit of 2)

### **Breeding Sheep**

1. Any breed or cross breeds will be eligible to compete.
2. Upon the decision of the show superintendent entries will be placed in classes by age with the day of judging being the base date.
3. All sheep must be penned in the designated areas.

12200 Ram Born Before 1-1 of Current Year (Limit of 2)

12201 Ram Lamb Born After 1-1 or 3-1 Current Year (Limit of 2)

12202 Ewe Born Before 1-1 Current Year (Limit of 2)

12203 Ewe Lamb Born After 1-1 or 3-1 Current Year (Limit of 2)

12204 Flock 1 Ram and 2 Ewe Lambs (Limit of 2)

### **Breeding Swine**

1. Any breed or cross breeds will be eligible to compete.
2. Upon the decision of the show superintendent entries will be placed in classes by age with the day of judging being the base date.
3. All swine must be penned in the designated areas.

12300 Breeding Gilt Born After 1-1 Current Year (Limit of 2)

### **Bucket Calf**

1. This project is for exhibitors between 7 and 12 years of age. Exhibitor must not have passed their 12th birthday by 1-1 of the current year.
2. Any breed or cross breeds will be eligible to compete.
3. Calves entered must be calved after 1-1 of the current year.
4. Members must obtain calves at least 90 days prior to the fair. There is no fair sale of bucket calves, but they may be kept and exhibited in the appropriate class at the following fair.
5. Members will be judged on: Over-all grooming appearance of their animal (clean, brushed, trimmed, etc.) - 25%; Ease at which member has worked with, halter broken, can lead and control the animal - 25%; Knowledge of their project - 50%
6. All beef exhibits must be shown haltered.

12400 Bucket Calf (Limit of 1)

### **Dairy Beef**

1. Any breed or cross breeds will be eligible to compete.
2. Dairy beef will be shown by breeds: Brown Swiss, Guernsey, Holstein, Ayrshire, Jersey, Milking Shorthorn. Three of a breed makes a class if not enough for a class they will show in AOB.
3. All beef must be penned in the designated areas.
4. All beef exhibits must be shown haltered.

12500 Bull Calf (Limit of 2)

12501 Heifer Calf (Limit of 2)

12502 Yearling Bull (Limit of 2)

12503 Yearling Heifers (Limit of 2)

12504 Two-Year Old Heifers (Limit of 2)

12505 Cows (Limit of 2)

### **Dairy Goat**

1. Any breed or cross breeds will be eligible to compete.
2. Upon the decision of the show superintendent entries will be placed in classes by age with the day of judging being the base date.
3. All goats must be penned in the designated areas.
4. Goats must be shown with all four feet on the ground. Exhibitors may use a collar, a collar with a short lead, or a halter when showing. Medium (3mm or smaller) pinch collar will be allowed.
5. No bucks of any age will be allowed on the grounds. Only does can show.
6. Horns should be tipped and rounded.
7. Caseous Lymphdenitis: All goats must be inspected and have no visible signs of this condition.

12600 Junior Doe 0-6 Months (Limit of 2)

12601 Intermediate Doe 6-12 Months (Limit of 2)

12602 Yearling Doe 12-24 Months (Limit of 2)

12603 Senior Doe 24-36 Months (Limit of 2)

12604 Senior Doe 36 Months Plus (Limit of 2)

### **Market Beef**

1. To be eligible to show, all market beef must weigh a minimum weight of 1,050 pounds. There is no maximum weight.
2. Any breed or cross breeds will be eligible to compete.
3. All market beef must be born in the previous calendar year to be shown.
4. All market beef will be weighed and classes will be broken into weight classes upon the decision of the show superintendent.
5. All beef must be penned in the designated areas.
6. All beef exhibits must be shown haltered.

12700 Market Beef [Minimum 1,050 Pounds] (Limit of 4)

### **Market Goat**

1. To be eligible to show, all market goats must weigh a minimum weight of 50 pounds. There is no maximum weight.
2. Any breed or cross breeds will be eligible to compete.
3. All market goats must be born after 1-1 of current year to be shown.
4. All market goats will be weighed and classes will be broken into weight classes upon the decision of the show superintendent.
5. All goats must be penned in the designated areas.
6. All goats must be shown with all four feet on the ground. Exhibitors may use a collar, a collar with a short lead, or a halter when showing. Medium (3mm or smaller) pinch collar will be allowed.
7. Horns should be tipped and rounded.
8. No bucks of any age will be allowed on the grounds. Only does can show.
9. All market goats must have baby teeth in place with no visible signs of permanent teeth.

12800 Market Goat [Minimum 50 Pounds] (Limit of 4)

### **Market Sheep**

1. To be eligible to show, all market sheep must weigh between 90 to 165 lbs.
2. Any breed or cross breeds will be eligible to compete.
3. All market sheep must be born after 1-1 of current year to be shown.
4. All market sheep will be weighed and classes will be broken into weight classes upon the decision of the show superintendent.
5. All sheep must be penned in the designated areas.
6. All market sheep are required to have lamb teeth to show, in sheep classes.

12900 Market Sheep [90-165 Pounds] (Limit of 4)

### **Market Swine**

1. To be eligible to show, swine must weigh between 220 to 300 lbs.
2. Any breed or cross breeds will be eligible to compete.
3. All market swine must be born after 1-1 of current year to be shown.
4. All market swine will be weighed and classes will be broken into weight classes upon the decision of the show superintendent.
5. All swine must be penned in the designated areas.



13000 Market Swine [220-300 Pounds] (Limit of 4)

### **Poultry**

1. All chickens must originate from a Pullorum-Typhoid clean flock as evidenced by a properly signed form OR evidence that the entry was purchased from a P-T clean source and have been physically separated from infested flocks OR present a properly signed form indicating that the entry has had a negative P-T test within 90 days prior to the show.
2. All entries must be in place by 1:30 p.m. Monday and remain until 8:00 a.m. Saturday.
3. Premiums will be withheld if poultry are not fed, watered, cages cleaned daily and assistance is not given on Saturday clean-up after release.
4. All birds must be deloused prior to the show to assist in prevention of the spread of diseases and parasites. Do not bring entry if there is sickness in the flock.
5. Poultry signs may be placed on cages after judging not to exceed 4" x 12" and are subject to the superintendent's approval.
6. Designate breed of poultry on entry card for each exhibit.

- 13100 Large Fowl - Standard Breeds - One YOUNG Bird of Either Sex (Limit of 1)
- 13101 Large Fowl - Standard Breeds - One OLD Bird of Either Sex (Limit of 1)
- 13102 Large Fowl - Production Pullets - Pen of 3 (Limit of 1)
- 13103 Large Fowl - Production Hens - Pen of 3 (Limit of 1)
- 13104 Large Fowl - Dual Purpose Pullets - Pen of 3 (Limit of 1)
- 13105 Large Fowl - Dual Purpose Hens - Pen of 3 (Limit of 1)
- 13106 Bantams - Standard Breeds - One YOUNG Bird of Either Sex (Limit of 1)
- 13107 Bantams - Standard Breeds - One OLD Bird of Either Sex (Limit of 1)
- 13108 Waterfowl - Ducks, Call, or Bantam, All Breeds - One Bird of Either Sex (Limit of 1)
- 13109 Waterfowl - Ducks, All Breeds - One Bird of Either Sex (Limit of 1)
- 13110 Waterfowl - Geese, All Breeds - One Bird of Either Sex (Limit of 1)
- 13111 Exhibition - Turkey, All Breeds - One Bird of Either Sex (Limit of 1)
- 13112 Exhibition - Other Poultry, All Breeds - One Bird of Either Sex [Peafowl, Pheasant, Etc.] (Limit of 1)

### **Rabbit**

1. All entries must be in place by 1:30 p.m. Monday and remain until 8:00 a.m. Saturday.
2. Premiums will be withheld if rabbits are not fed, watered, cages cleaned daily and assistance is not given on Saturday clean-up after release.

- 13200 Pre-Junior Doe [Certain Breeds Only] (Limit of 1)
- 13201 Junior Doe - Under Six Months of Age (Limit of 1)
- 13202 Doe 6-8 Months (Limit of 1)
- 13203 Senior Doe Over 8 Months (Limit of 1)
- 13204 Pre-Junior Buck [Certain Breeds Only, per State Fair

- Rules] (Limit of 1)
- 13205 Junior Buck Under 6 Months (Limit of 1)
- 13206 Buck 6-8 Months (Limit of 1)
- 13207 Senior Buck Over 8 Months (Limit of 1)
- 13208 Meat Pen - 3 Rabbits of the Same Breed and Variety (Limit of 1)
- 13209 All Other Breeds (Limit of 1)

\*\*\*\*\*

**◆ 4-H GENERAL RULES**

1. This division is only open to youth in good standing with 4-H.
2. Pre-entry is required and should be posted on Fair Entry ([www.nwksfair.fairentry.com](http://www.nwksfair.fairentry.com)) on or before the designated deadline. Deadline is on the entry and judging schedule page of this book.
3. All entries are final after the fair pre-entry deadline (deadline can be found on the entry and judging schedule page of this book). Absolutely no changes will be accepted after the pre-entry deadline. It is the responsibility of the exhibitor to make sure all entries are entered correctly prior to the fair pre-entry deadline.
4. All ages are as of 1-1 of the current year.
5. Exhibit tags must be filled out for each entry. 4-H tags may be obtained at the Sherman County Extension Office before the fair. 4-H tags may be filled out and attached before the fair or at entry time.
6. If an entry is made in the 4-H division, it cannot be entered in the Open Class division. 4-H'ers must be currently enrolled in the project to enter a 4-H class; otherwise the entry must be made to Open Class.
7. All Premiums will be: Blue \$3, Red \$2, White \$1 unless otherwise stated.
8. Showmanship monetary premiums supplied by First National Bank, Goodland, KS (paid at the time of judging) Blue \$3, Red \$2, White \$1.
9. Outstanding exhibits will receive a State Fair award. Those will be screened for State Fair based upon available State Fair classes and the age of the exhibitor. It is the responsibility of the individual 4-H member to pre-enter state fair entries in writing to the Extension office.
10. If there are fewer than 3 exhibits in a class, discretion of the judge will be used on champion and reserve champion awards.
11. Any person attempting to interfere with the judges or anyone who publicly voices disapproval of the judge's decision shall forfeit any awards won.
12. Decisions of the judges shall be final subject only to written protests which shall be acted upon.
13. There is a universal release time from 8:00 - 10:30 a.m. on the final Saturday of fair. All articles must be claimed by 10:30 a.m. Failure to comply with this requirement will bar said exhibitor from participating in premiums which may have been awarded by the judges in any department of the fair. The Extension Office and Fair Board will not be held responsible for picking up articles not claimed.
14. In no event, shall the Northwest Kansas District Free Fair or the Sherman County Extension Office be held responsible for any loss or damage to the property or person of exhibitor or other persons while on the

fairgrounds whether said loss or damage shall arise from accident or any cause whatsoever.

15. All protests must be made in writing to the president of the fair board, accompanied by an affidavit setting forth the grounds of protest. Such protests must be filed on or before 3:00 pm of Friday of fair.
16. All premiums may be picked up at the time of scheduled exhibit release. 4-H will receive their premiums from the Fair Office near the entrance to the grandstands. All unclaimed checks will be in the Sherman County Extension Office for 3 weeks following the fair. After 3 weeks, they will be turned over to the Fair Board. All checks will be void 90 days after fair.
17. Family and Consumer Science Award - An Overall Family and Consumer Science Award will be given to the top 4-H youth in both Senior and Junior divisions who accumulate the most points in the following projects: Foods/Nutrition, Arts & Crafts, Home Environment, Needlework, Knitting Crocheting, Clothing Style Revue. Three points will be given to each blue, two points for red, one point for white, with two additional points for each champion and one additional point for each reserve champion. This award will be presented at the 4-H Achievement Awards Reception.

#### ◆ 4-H DOG SHOW

1. General rules apply.
2. Pre-entry required.
3. Age Groups:  
Junior Age 7-9  
Intermediate Age 10-13  
Senior Age 14-18
4. Awards (CC-20, RCC-20, GC-13, RGC-13):  
Class Champion Agility On Leash  
Reserve Class Champion Agility On Leash  
Class Champion Dog Agility Off Leash I  
Reserve Class Champion Agility Off Leash I  
Class Champion Dog Agility Off Leash II  
Reserve Class Champion Agility Off Leash II  
Class Champion Dog Agility Off Leash III  
Reserve Class Champion Agility Off Leash III  
Class Champion Dog Agility Off Leash IV  
Reserve Class Champion Agility Off Leash IV

Class Champion Dog Pre-Novice A Obedience  
Reserve Class Champion Dog Pre-Novice A Obedience  
Class Champion Dog Pre-Novice B Obedience  
Reserve Class Champion Dog Pre-Novice B Obedience  
Class Champion Dog Pre-Novice C Obedience  
Reserve Class Champion Dog Pre-Novice C Obedience  
Class Champion Dog Novice A Obedience  
Reserve Class Champion Dog Novice A Obedience  
Class Champion Dog Novice B Obedience  
Reserve Class Champion Dog Novice B Obedience  
Class Champion Dog Graduate Novice Obedience  
Reserve Class Champion Dog Graduate Novice Obedience  
Class Champion Dog Open A Obedience  
Reserve Class Champion Dog Open A Obedience  
Class Champion Dog Open B Obedience  
Reserve Class Champion Dog Open B Obedience  
Class Champion Dog Utility A Obedience

Reserve Class Champion Dog Utility A Obedience  
Class Champion Dog Utility B Obedience  
Reserve Class Champion Dog Utility B Obedience

Class Champion Dog Rally Level II Off Leash  
Reserve Class Champion Rally Level II Off Leash  
Class Champion Dog Rally Level III Off Leash  
Reserve Class Champion Rally Level III Off Leash

Class Champion Dog Showmanship Junior  
Reserve Class Champion Dog Showmanship Junior  
Class Champion Dog Showmanship Intermediate  
Reserve Class Champion Dog Showmanship  
Intermediate  
Class Champion Dog Showmanship Senior  
Reserve Class Champion Dog Showmanship Senior

Grand Champion Dog Agility On Leash  
Reserve Grand Champion Dog Agility On Leash  
Grand Champion Dog Agility Off Leash  
Reserve Grand Champion Dog Agility Off Leash

Grand Champion Dog Pet Class Obedience  
Reserve Grand Champion Dog Pet Class Obedience  
Grand Champion Dog Puppy Class Obedience  
Reserve Grand Champion Dog Puppy Class Obedience  
Grand Champion Dog Pre-Novice Obedience  
Reserve Grand Champion Dog Pre-Novice Obedience  
Grand Champion Dog Novice Obedience  
Reserve Grand Champion Dog Novice Obedience  
Grand Champion Dog Open Obedience  
Reserve Grand Champion Dog Open Obedience  
Grand Champion Dog Utility Obedience  
Reserve Grand Champion Dog Utility Obedience

Grand Champion Dog Rally On Leash  
Reserve Grand Champion Dog Rally On Leash  
Grand Champion Dog Rally Off Leash  
Reserve Grand Champion Dog Rally Off Leash

Grand Champion Dog Showmanship Junior  
Reserve Grand Champion Dog Showmanship Junior  
Grand Champion Dog Showmanship Intermediate  
Reserve Grand Champion Dog Showmanship  
Intermediate  
Grand Champion Dog Showmanship Senior  
Reserve Grand Champion Dog Showmanship Senior

5. Entries must be made to the superintendent prior to the show.
6. Entries may be judged in only one class. Open class entries will be judged with the 4-H dog show.
7. 4-H manuals and guidelines will be followed.
8. Each entrant must have personally trained and cared for the dog shown.
9. Dogs must be on a leash at all times when on the fairgrounds.
10. Entries must have proof of current rabies, distemper and Parvo immunizations.

### **Dog Agility**

1. In order to advance from Agility I to Agility II, or from Agility II to Agility III, the team must receive two (2)

qualifying scores of 190 points or greater (purple ribbons) under two different Kansas 4-H certified Agility judges at local, multi-county or state competitions. It is suggested that this move be made after the state fair and at the beginning of a new 4-H year.

2. To earn a state-fair qualifying score the team must pass with a score of 170 points or greater.

- 40100 On Leash [Must Also Show in Obedience Class]  
(Limit of 1)
- 40101 Off Leash I [Must Also Show in Obedience Class]  
(Limit of 1)
- 40102 Off Leash II [Must Also Show in Obedience Class]  
(Limit of 1)
- 40103 Off Leash III [Must Also Show in Obedience Class]  
(Limit of 1)
- 40104 Off Leash IV [Must Also Show in Obedience Class]  
(Limit of 1)

### **Dog Obedience**

1. Once a 4-H'er scores 170 points or greater with the same dog under two different judges, the member must advance to the next obedience level at the start of the next 4-H year. At any time that the leader, parent and member agree that the 4-H'er and dog are ready to move to the next level, they may; but once that is done, they cannot regress to a lower level.
2. A score of 170 points or greater is a qualifying score with at least 50 percent in each exercise. This qualifying score must be earned at the novice level or higher to qualify for the Kansas State Fair 4-H Dog Show. In the case of a tie, hold a run-off on the heel free exercise one team at a time.

- 40200 Pet Class (Limit of 1)
- 40201 Puppy Class - Puppy under 6 months of age. (Limit of 1)
- 40202 Pre-Novice A - First year members with first year dog only, all exercises on leash, no State Fair class. (Limit of 1)
- 40203 Pre-Novice B - Second year members or second year dog only, all exercises on leash, no State Fair class. (Limit of 1)
- 40204 Pre-Novice C - Third year member or third year dog only, all exercises on leash, no State Fair class. (Limit of 1)
- 40205 Novice A - Members/Dogs some off leash. Must have qualifying score in sub-novice class the previous year. (Limit of 1)
- 40206 Novice B - Experienced 4-H'er or experienced dog, the dog has been shown qualified in Novice A previous year. (Limit of 1)
- 40207 Graduate Novice - All exercises off the leash, includes heel on leash, stand for exam [off leash], heel free, drop on recall, long sit [handler out of sight 5 minutes]. (Limit of 1)
- 40208 Open A - 4-H'ers and dogs who have qualified from Advanced or Graduate novice, all exercises off the leash. (Limit of 1)
- 40209 Open B - 4-H'ers and dogs who have qualified or Open A, exercises off the leash. (Limit of 1)
- 40210 Utility A - 4-H'ers with a dog that qualified in Open

- B, exercises off the leash. (Limit of 1)  
40211 Utility B - 4-H'ers with a dog that qualified from  
Utility A. (Limit of 1)

### **Dog Rally**

1. Normal progression from one level to the next begins at Level 1, then progressing to the next level after receiving 80 points or greater (blue and/or purple ribbon) from two different 4-H certified Rally judges in the same year. Normally, a team would advance to the next level at the beginning of the next 4-H year. However, a team may start at a higher level, if it desires. After participating at a higher level, the team may not go back to a lower level.
2. To qualify for the State Fair 4-H Dog Show the team must receive a blue or purple (80 points or greater) in a Level 2 or Level 3 class at the local or district level. The Level 1 class will not be held at the State Fair 4-H Dog Show, since it is an on-lead class.

- 40300 Level I On Leash (Limit of 1)  
40301 Level II Off Leash (Limit of 1)  
40302 Level III Off Leash (Limit of 1)

### **Dog Showmanship**

1. To qualify to show at the Kansas State Fair Dog Show, the 4-H'er must have been awarded a blue or purple ribbon at a county or invitational 4-H show.

- 40400 Junior Age 7-9 - Dog Showmanship (Limit of 1)  
40401 Intermediate Age 10-13 - Dog Showmanship (Limit of 1)  
40402 Senior Age 14-18 - Dog Showmanship (Limit of 1)

### **◆ 4-H AQUARIUM PETS**

1. General rules apply.
2. Pre-entry required.
3. Age Groups:  
Junior Age 7-13  
Senior Age 14-18
4. Awards (CC-2, RCC-2, GC-1, RGC-1):  
Class Champion Aquarium Pets Junior  
Reserve Class Champion Aquarium Pets Junior  
Class Champion Aquarium Pets Senior  
Reserve Class Champion Aquarium Pets Senior  
Grand Champion Aquarium Pets  
Reserve Grand Champion Aquarium Pets
5. 4-H manuals and guidelines will be followed.
6. 4-H exhibits will be judged at the same time as open class exhibits, but they will not compete against each other.
7. Junior & Seniors will be judged together if there are not enough entries to judge separately at the discretion of the superintendent.
8. All aquariums are pre-judged in the home during pre-fair week.
9. Aquarium Pets include fish and reptiles kept in aquariums.
10. Aquariums will be judged on cleanliness, balance and habitat.
11. Pictures will be taken by the judge or Extension Office for a fair display.

- 45400 Junior Age 7-13 - Aquarium Pets (Limit of 3)  
45401 Senior Age 14-18 - Aquarium Pets (Limit of 3)

◆ **4-H ART**

1. General rules apply.
2. Pre-entry required.
3. Age Groups:  
Junior Age 7-13  
Senior Age 14-18
4. Awards (CC-0, RCC-0, GC-2, RGC-2):  
Grand Champion Art Junior  
Reserve Grand Champion Art Junior  
Grand Champion Art Senior  
Reserve Grand Champion Art Senior
5. The entry must be the work of the exhibitor and work of the current year.
6. All exhibits which need to be hung MUST have a wire or saw tooth hanger attached to be properly displayed. If necessary hardware is not attached, it may not be displayed.
7. Four items only can be selected to exhibit at the Kansas State Fair. These items will be selected by the judge at the time of judging. These items will not be judged on the state level. A merit of honor group will be selected and awarded honor stickers.

- 40500 Junior Age 7-13 - Graphic Art, Oil, Pencil and Charcoal (Limit of 4)  
40501 Senior Age 14-18 - Graphic Art, Oil, Pencil and Charcoal (Limit of 4)

◆ **4-H BOOTHS**

1. General rules apply.
2. Pre-entry required.
3. Age Groups:  
Junior Age 7-13  
Senior Age 14-18
4. Awards (CC-0, RCC-0, GC-4, RGC-4):  
Grand Champion 4-H Project Booth Junior  
Reserve Grand Champion 4-H Project Booth Junior  
Grand Champion 4-H Project Booth Senior  
Reserve Grand Champion 4-H Project Booth Senior  
Grand Champion Wheat Show Booth  
Reserve Grand Champion Wheat Show Booth  
Grand Champion Club Booth  
Reserve Grand Champion Club Booth

**Project Booth**

1. The booth size is 3' x 3'. The booth may be removed from the Ag Pavilion before fair and put together at home. Booth should be in place by 11:00 a.m. on Tuesday.
2. Project Booths are to be used for illustrating a project carried out by the exhibitor and the work of the member enrolled in the current year of 4-H work.
3. This class is only to be used for those projects which have no classes at the fair. Example: Reading, Citizenship, Shooting Sports, Leadership.
4. No live animals can be included.
5. Booth should remain uncovered before judging, but netting can be placed on the front of the booth after awards are determined.
6. Standard size 2' x 4' Tri-Fold Display boards are

recommended for the Wheat Show booth to comply with Kansas State Fair guidelines.

### **Club Booth**

1. Set up can be done Sunday and/or Monday. The booth should be uncovered by 11:00 and ready for judging at 11:30 a.m. on Tuesday.
2. Each booth should illustrate or demonstrate a phase of youth work which is being practiced by club members within the club represented.
3. Exhibit material should be made or grown by the exhibitors in the current year.
4. No live animals can be included.
5. Copyrighted, trademarked, and/or name-brand materials are not allowed.
6. The booth is approximately 6' x 6' and no exhibit or display should be more than 6' from the floor.
7. Display space should be cared for daily and cleaned up after the fair or prize money will be forfeited.
8. If music is used in the booth, the volume must be such that it is to be heard within the area of the booth only.
9. Entry tag is to be attached to the booth on the left-hand side.
10. Netting can be placed on the booth after judging is completed.
11. Premiums: Champion \$30, Reserve Champion \$20, Blue \$15, Red \$12.50, White \$7.50

40600 Junior Age 7-13 - 4-H Project Booth (Limit of 1)

40601 Senior Age 14-18 - 4-H Project Booth (Limit of 1)

40602 Wheat Show Booth (Limit of 1)

40603 Club Booth (Limit of 1)

### **◆ 4-H CAT**

1. General rules apply.
2. Pre-entry required.
3. Age Groups:  
Junior Age 7-13  
Senior Age 14-18
4. Awards (CC-2, RCC-2, GC-1, RGC-1):  
Class Champion Cat Junior  
Reserve Class Champion Cat Junior  
Class Champion Cat Senior  
Reserve Class Champion Cat Senior  
Grand Champion Cat  
Reserve Grand Champion Cat
5. 4-H manuals and guidelines will be followed.
6. 4-H exhibits will be judged at the same time as open class exhibits, but they will not compete against each other.
7. Junior & Seniors will be judged together if there are not enough entries to judge separately at the discretion of the superintendent.
8. Pre-judged.
9. All cats must have proof of rabies and distemper immunization. An immunization sheet must be completed by a veterinarian and presented to the superintendent at the time of judging.
10. Exhibitor must be present when judging occurs.
11. All cats must be groomed by the exhibitor.
12. The cat will be judged on cleanliness, disposition, overall condition.



- 45500 Age 7-18 - Kitten [Will not be Considered for Champion] (Limit of 3)
- 45501 Junior Age 7-13 - Registered or Non-Registered Cat (Limit of 3)
- 45502 Senior Age 14-18 - Registered or Non-Registered Cat (Limit of 3)

**◆ 4-H CLOTHING**

1. General rules apply.
2. Pre-entry required.
3. Age Groups:  
Junior Age 7-13  
Senior Age 14-18
4. Awards (CC-0, RCC-0, GC-4, RGC-4):  
Grand Champion Clothing Junior  
Reserve Grand Champion Clothing Junior  
Grand Champion Clothing Senior  
Reserve Grand Champion Clothing Senior  
Grand Champion Recycled Clothing Junior  
Reserve Grand Champion Recycled Clothing Junior  
Grand Champion Recycled Clothing Senior  
Reserve Grand Champion Recycled Clothing Senior
5. All work exhibited must be the product of the current year.
6. Every garment must be properly labeled with a label obtained from the Extension Office or made by the exhibitor. Sew on the inside of garment (back of neck, center back of waistband, or left end of apron band). Label each piece.
7. Before exhibiting, garments may have been worn, but must be carefully laundered. Place entry form on front left shoulder seam of garment or to the left side of waistband with hanger opening facing to the left, as if you were wearing the garment, so that the hanger opening faces the attached entry form. Place in a clear plastic bag.
8. Two items per class may be entered in Level I, Level II, Level III, and Level IV, but they must be different (example: only one skirt, one dress, one backpack, one laundry bag, etc.)
9. Pre-cut kits are acceptable for all clothing classes.
10. Recycled Clothing Project - An item made of at least 50% recycled material (recycled means reusing an existing item in a new way). Could be remaking/redesigning a garment, re-purposing a clothing item for a new use, etc. Must include sewing of some kind. A 3" x 5" card must accompany entry describing the recycled materials and how they were used in the item.
11. The exhibitor is encouraged to attach an index card or photo, no larger than 3"x5" with the entry form to give the judge any information which the exhibitor thinks would be helpful for the judge to know.

- 40700 Level I - Notebook (Limit of 2)
- 40701 Level I - An Article (Limit of 2)
- 40702 Level I - Garment [Simple Pajama Pants, Skirt, Apron] (Limit of 2)
- 40703 Level I - Any Other Item or Accessory Made in This Division (Limit of 2)
- 40704 Level I - Recycled Clothing (Limit of 2)
- 40705 Level II - Notebook (Limit of 2)

- 40706 Level II - An Article (Limit of 2)
- 40707 Level II - A Garment [Skirt, Shorts, Simple Dress, Sweat Pants or Top] (Limit of 2)
- 40708 Level II - 2 piece Coordinated Outfit (Limit of 2)
- 40709 Level II - Any Other Item Made in This Division (Limit of 2)
- 40710 Level II - Recycled Clothing (Limit of 2)
- 40711 Level III - Notebook (Limit of 2)
- 40712 Level III - A Garment [Shorts, Dress] (Limit of 2)
- 40713 Level III - An Article (Limit of 2)
- 40714 Level III - 2 piece Coordinated Outfit (Limit of 2)
- 40715 Level III - 3 piece Coordinated Outfit (Limit of 2)
- 40716 Level III - Recycled Clothing (Limit of 2)
- 40717 Level IV - Garment [Jacket, Dress, Etc.] (Limit of 2)
- 40718 Level IV - 2 piece Coordinated Outfit (Limit of 2)
- 40719 Level IV - 3 piece Coordinated Outfit (Limit of 2)
- 40720 Level IV - Other Item (Limit of 2)
- 40721 Level IV - Matching Child's Garment (Limit of 2)
- 40722 Level IV - Recycled Clothing (Limit of 2)

#### ◆ 4-H CLOVERBUDS

1. General rules apply.
2. Pre-entry required.
3. Age Groups:  
Pre-4-H age & tag-a-longs are to exhibit in Cloverbuds.
4. Awards (CC-0, RCC-0, GC-0, RGC-0):  
No Grand Champion or Reserve Grand Champion awards.
5. Exhibitor must be currently enrolled in the Cloverbuds Project.
6. Each exhibitor is limited to one entry in the Cloverbuds Division. 1-5 articles are considered an entry and ribbons will be awarded per entry, not article. Exhibits require only one entry tag. Items being displayed can be those that were made at the Cloverbuds meetings or elsewhere. Example: Art Center, school, day camp, church or home.
7. If enrolled in any of the following projects, you must exhibit in the regular project, not Cloverbuds: Foods, Sewing, Pets, Arts & Crafts, Horticulture (Garden, Flowers or House Plants), Woodworking, Photography, Reading, Entomology, Geology, Citizenship, and Wildlife.

40800 Cloverbuds (Limit of 1)

#### ◆ 4-H CRAFTS

1. General rules apply.
2. Pre-entry required.
3. Age Groups:  
Junior Age 7-13  
Senior Age 14-18
4. Awards (CC-2, RCC-2, GC-7, RGC-7):  
Class Champion Legos/K'Nex From Kit  
Reserve Class Champion Legos/K'Nex From Kit  
Class Champion Legos/K'Nex Original Design  
Reserve Class Champion Legos/K'Nex Original Design  
Grand Champion Craft Junior  
Reserve Grand Champion Craft Junior  
Grand Champion Craft Senior  
Reserve Grand Champion Craft Senior  
Grand Champion Recycled Craft  
Reserve Grand Champion Recycled Craft

- Grand Champion Ceramics Junior
- Reserve Grand Champion Ceramics Junior
- Grand Champion Ceramics Senior
- Reserve Grand Champion Ceramics Senior
- Grand Champion Legos/K'Nex Junior
- Reserve Grand Champion Legos/K'Nex Junior
- Grand Champion Legos/K'Nex Senior
- Reserve Grand Champion Legos/K'Nex Senior
- 5. Crafts - Items made from pre-constructed kits, mold, instructions, patterns, etc.
- 6. Recycled Crafts - Items made from recycled materials.
- 7. Ceramics - Items made from pre-constructed kits, mold, instructions, patterns, etc.
- 8. Lego/K'Nex - Items made from kit or original design.

- 40900 Junior Age 7-13 - Craft (Limit of 4)
- 40901 Senior Age 14-18 - Craft (Limit of 4)
- 40902 Age 7-18 - Recycle Craft (Limit of 4)
- 40903 Junior Age 7-13 - Ceramics - Hand Molded or Wheel Thrown (Limit of 2)
- 40904 Senior Age 14-18 - Ceramics - Hand Molded or Wheel Thrown (Limit of 2)
- 40905 Junior Age 7-13 - Legos/ K'Nex From Kit (Limit of 2)
- 40906 Junior Age 7-13 - Legos/K'Nex Original Design (Limit of 2)
- 40907 Senior Age 14-18 - Legos/ K'Nex From Kit (Limit of 2)
- 40908 Senior Age 14-18 - Legos/K'Nex Original Design (Limit of 2)

**◆ 4-H CROPS**

- 1. General rules apply.
- 2. Pre-entry required.
- 3. Age Groups:  
Age 7-18
- 4. Awards (CC-0, RCC-0, GC-1, RGC-1):  
Grand Champion Crop  
Reserve Grand Champion Crop
- 5. Each exhibitor is allowed only one exhibit per class except for hard red winter wheat which allows five exhibits, different varieties.
- 6. All exhibits must have been grown in the territory of Northwest Kansas by the exhibitor unless otherwise stated.

- 41000 Hard Red Winter Wheat - 1 Gallon Jar (Limit of 5)
- 41001 White Wheat - 1 Gallon Jar (Limit of 1)
- 41002 Barley - 1 Gallon Jar (Limit of 1)
- 41003 Oats - 1 Gallon Jar (Limit of 1)
- 41004 Grain Sorghum - 1 Gallon Jar (Limit of 1)
- 41005 Corn - 1 Gallon Jar (Limit of 1)
- 41006 Corn - 10 Ears (Limit of 1)
- 41007 Grain Sorghum - 10 Heads (Limit of 1)
- 41008 Alfalfa Hay - 1 Bundle (Limit of 1)
- 41009 Other Hay - 1 Bundle (Limit of 1)
- 41010 Other Crop (Limit of 1)

**◆ 4-H ENERGY MANAGEMENT**

- 1. General rules apply.
- 2. Pre-entry required.
- 3. Age Groups:

Junior Age 7-13

Senior Age 14-18

4. Awards (CC-0, RCC-0, GC-2, RGC-2):  
Grand Champion Energy Management Junior  
Reserve Grand Champion Energy Management Junior  
Grand Champion Energy Management Senior  
Reserve Grand Champion Energy Management Senior
5. The exhibit must operate.
6. Indicate on the entry tag whether exhibitor is a Junior or Senior, they will be judged separately.

- 41100 Household Wiring and Indoor Lighting - Includes original, kit, or restoration of projects such as lamps, small appliances, or other items intended for household usage. (Limit of 2)
- 41101 Outdoor Wiring and Shop Lighting - Includes original, kit or restoration of projects such as portable spot lights, shop lights, portable power tools, or other items intended for shop or outdoor usage. Construction, test lamp, outdoor lighting, study centers, decorative lamps, etc. (Limit of 2)
- 41102 Extension Cords and Trouble Lights - Includes original, kit or restoration of extension cords or trouble lights. (Limit of 2)
- 41103 AC Demonstration Projects - Includes projects which are AC in nature such as household wiring demonstration of switches or outlets, entrance panels or other AC demonstration projects. (Limit of 2)
- 41104 DC Demonstration Projects - Includes projects which are DC battery powered such as series/parallel lighting, motor, household bell or other types of projects. (Limit of 2)
- 41105 Motors, Fans, Heaters or Blowers - Includes original, restoration or kits which utilize an AC or DC motor, fan, heater or blower. (Limit of 2)
- 41106 Electronic Projects From Kit - Such as radios, telephones, toy robots, etc. Include instruction/assembly manual. (Limit of 2)
- 41107 Electronic Projects From Materials Not Supplied as a Kit - May be constructed using printed circuit board, wire wrap, or breadboard techniques. (Limit of 2)
- 41108 Educational Activity Projects - Includes AC or DC projects for activities with an educational emphasis, such as types of wiring or identification of components, or testing of one's knowledge such as quiz boards. (Limit of 2)

#### ◆ 4-H ENTOMOLOGY

1. General rules apply.
2. Pre-entry required.
3. Age Groups:  
Age 7-18
4. Awards (CC-0, RCC-0, GC-1, RGC-1):  
Grand Champion Entomology  
Reserve Grand Champion Entomology
5. Introductory (Unit I) Exhibits are placed in a small box (school or cigar) covered with plastic. All insects are to be properly mounted. See the specific phase for specimen number limitations.
6. Beginning Entomology I and II, Intermediate Entomology, and Advanced Entomology exhibits are placed in plexiglass covered, wooden box 18" X 24" X 3-

1/2". See the specific phase for box and specimen number limitations. Arrange specimens in the box so it can be displayed lengthwise. All boxes in these phases should be covered by plexiglass.

7. All insects are to be properly mounted.
8. The number of orders, specimens (and families where required) must be included on the exhibitor's box identification label.
9. Emphasis in judging will be placed on the overall variety of insects represented in the collection, accuracy of identification, skill and technique acquired in mounting of specimens, and overall arrangement and appearance of the collection.
10. For each collection class, two labels will be centered on the pin beneath each specimen. First (closest to the specimen) is the common name label and the second label is a date/locality label.
11. Details on identification, labeling, purchase of pins, collection numbers, etc. are available at the Extension Office.

41200 Introductory Entomology - Display in a small box (school or cigar) with a piece of plastic wrap or plexiglass taped across the top of the box. Requires a display of 15 to 30 insects containing a minimum of 6 orders. No state fair class for this phase. (Limit of 1)

41201 Beginning Entomology I - Display in one standard box-a minimum of 50 and a maximum of 125 species representing at least 7 orders. Follow the general rules listed for all collections. Specimens should be grouped according to order with the order labels pinned to the base of the box. Members can exhibit in this class a maximum of 3 years, or until they receive a purple ribbon at the Kansas State Fair, whichever comes first. (Limit of 1)

41202 Beginning Entomology II - Display in one standard box a minimum of 75 and a maximum of 150 species representing at least 9 orders. Members can exhibit in this class a maximum of 3 years, or until they receive a purple ribbon at the Kansas State Fair, whichever comes first. (Limit of 1)

41203 Intermediate Entomology - Display a minimum of 100 and a maximum of 300 insects representing at least 10 orders. Two standard boxes can be used. All specimens should be grouped in order; in addition family identification is required for all insects in any two of the following six orders: Orthoptera, Hemiptera, Homoptera, Coleoptera, Diptera, and Hymenoptera are to be identified to family and the number of families in these order groupings, and family labels will be pinned to the bottom of the box to represent subdivisions of the appropriate order. Members can exhibit in this class a maximum of 3 years. (Limit of 1)

41204 Advanced Entomology - Display a minimum of 150 and a maximum of 450 insects representing at least 12 orders. Three standard boxes can be used. Family identification is required for all insects belonging to the six basic orders as outlined under the Intermediate phase. Family identification of insects in the remaining orders is optional, but desirable as

long as accuracy is maintained. All butterflies appearing in the collection should be labeled with the correct common name. Members may continue to exhibit in this class at the Kansas State Fair for an unrestricted number of years as long as they remain eligible for 4-H membership. (Limit of 1)

◆ **4-H FIBER ARTS**

1. General rules apply.
2. Pre-entry required.
3. Age Groups:  
Junior Age 7-13  
Senior Age 14-18
4. Awards (CC-0, RCC-0, GC-6, RGC-6):  
Grand Champion Knitting Junior  
Reserve Grand Champion Knitting Junior  
Grand Champion Knitting Senior  
Reserve Grand Champion Knitting Senior  
Grand Champion Crocheting Junior  
Reserve Grand Champion Crocheting Junior  
Grand Champion Crocheting Senior  
Reserve Grand Champion Crocheting Senior  
Grand Champion Needlework Junior  
Reserve Grand Champion Needlework Junior  
Grand Champion Needlework Senior  
Reserve Grand Champion Needlework Senior
5. When articles which are normally worn as a pair are exhibited, both articles must be shown together. Fasten them securely with yarn.
6. Special consideration will be given to articles which are of original design. Such articles should have a note attached explaining the original design.
7. Identification Label - Type or print on 3"x 2½" piece of cloth: class number, exhibitor's name; Extension Office has these labels. Sew or safety pin this ID label on the corner of flat articles. For garments, attach ID label to the front left shoulder seam, or left side of waistband, as if you were wearing the garment.
8. Articles should be exhibited in plastic bags.

- 41300 Knitting - Beginner - First Year in Project (Limit of 2)
- 41301 Knitting - Intermediate - Second and Third Year in Project (Limit of 2)
- 41302 Knitting - Senior - Advanced - Beyond Third Year in Project (Limit of 2)
- 41303 Knitting - Felted (Limit of 2)
- 41304 Crocheting - Beginner - First Year in Project (Limit of 2)
- 41305 Crocheting - Intermediate - Second and Third Year in Project (Limit of 2)
- 41306 Crocheting - Senior - Advanced - Beyond Third Year in Project (Limit of 2)
- 41307 Crocheting - Felted (Limit of 2)
- 41308 Needlework - Embroidery (Limit of 2)
- 41309 Needlework - Crewel Embroidery (Limit of 2)
- 41310 Needlework - Applique (Limit of 2)
- 41311 Needlework - Needlepoint (Limit of 2)
- 41312 Needlework - Quilting (Limit of 2)
- 41313 Needlework - Counted Cross Stitch (Limit of 2)
- 41314 Needlework - Candle Wicking (Limit of 2)
- 41315 Needlework - Miscellaneous (Limit of 2)

41316 Needlework - Other (Limit of 2)

◆ **4-H FLORICULTURE**

1. General rules apply.
2. Pre-entry required.
3. Age Groups:  
Age 7-18
4. Awards (CC-0, RCC-0, GC-1, RGC-1):  
Grand Champion Floriculture  
Reserve Grand Champion Floriculture
5. Entry tags should include exhibitor name, division number and title of class. Please check each flower entry description regarding the size and amount of each specimen entered. Entries with incorrect amount of specimen will not be judged.
6. Exhibitors must be enrolled in the horticulture project.
7. Vases for floriculture entries will be furnished except for arrangement and house plant departments.
8. Leave foliage and stem as long as possible. The flowers' own foliage always adds to the exhibit.
9. House Plants - Container grown plants must have been in exhibitor' possession for at least three months.
10. Must be labeled as to variety and care.

41400 Annual Garden Flower - Cut Specimen, Single Stem (Limit of 10)

41401 Perennial Garden Flower - Cut Specimen, Single Stem (Limit of 10)

41402 Wild Flowers - Kansas Gay Feather - 1 Stem (Limit of 1)

41403 Wild Flowers - Golden Rod - 1 Stem (Limit of 1)

41404 Wild Flowers - Grass - 3 Stems (Limit of 1)

41405 Wild Flowers - Snow on the Mountain - 1 Stem (Limit of 1)

41406 Wild Flowers - Wild Rose - 3 Flowers (Limit of 1)

41407 Wild Flowers - Other - 1 Stem (Limit of 1)

41408 House Plants - Cactus (Limit of 1)

41409 House Plants - Succulent (Limit of 1)

41410 House Plants - Vining Philodendron (Limit of 1)

41411 House Plants - Violet (Limit of 1)

41412 House Plants - Other (Limit of 1)

41413 Arrangements - A Painter's Palette (Limit of 1)

41414 Arrangements - To A Dear Teacher (Limit of 1)

41415 Arrangements - Dried Floral (Limit of 1)

41416 Fairy Garden (Limit of 1)

◆ **4-H FOOD PRESERVATION**

1. General rules apply.
2. Pre-entry required.
3. Age Groups:  
Age 7-18
4. Awards (CC-0, RCC-0, GC-1, RGC-1):  
Grand Champion Food Preservation  
Reserve Grand Champion Food Preservation
5. 4-H'ers must be enrolled in a foods project to be eligible to participate.
6. All exhibits must have been preserved since the fair of the previous year.
7. Recommended method of processing must be used. Open kettle processed foods and oven canned food will be disqualified. Pickles and sweet spreads must be finished by the water bath process. Low acid products must be

pressure processed properly for the altitude of residence. The label must include the canning method and process time.

8. Exhibits must be sealed in clean standard canning jars, half-pint, etc., with two-piece lids. Jars must be sealed when entered. Food preservation is judged visually without opening the jar so only clear jars should be used. Colored lids/rings will be accepted.
9. Each jar exhibited must be labeled with uniform label placed one inch from the base of jar. Jelly must be in ½ pint or pint jar. All other products must be in pint or quart jars. Label must not cover brand name of jar.
10. Hole-punch the entry card and use a rubber band to attach entry card around the top of the jar. If using a plastic bag for dried foods, attach entry card to the bag.
11. BALL® “BRING OUT YOUR BEST™” YOUTH FOOD PRESERVATION AWARDS presented by: BALL® & KERR® HOME CANNING To promote the art of home canning, and to honor youths who excel at the art of home canning, Ball® & Kerr® Home Canning is offering First Place Youth Award categories. Judges will select the best entry submitted by a youth in Fruit, Vegetable, Pickle and Soft Spread categories canned in Ball® Jars sealed with Ball® Bands with Dome® Lids or Ball® Collection Elite™ Decorative Bands with Dome® Lids, or canned in Kerr® Jars sealed with Kerr® Bands with Self-Sealing® Lids or Ball® Collection Elite™ Decorative Bands with Dome® Lids. In addition, selections of the best entry submitted by a youth in the Soft Spreads category will be limited to entries prepared using one of the Ball® Fruit Jell® Pectins: Regular, No Sugar Needed, or Liquid.

41500 Sweet Spreads and Syrups (Limit of 3)

41501 Fruits and Juices (Limit of 3)

41502 Low Acid Vegetables [Green Beans, Corn Etc.]  
(Limit of 3)

41503 Pickles and Relishes (Limit of 3)

41504 Meats (Limit of 3)

41505 Tomato and Tomato Products (Limit of 3)

41506 Dried Foods - 2 kinds - Display in small jars, clear plastic bags, or other see-through container.  
Suggested amount: 1/3 to 1/2 cup or three or four pieces per exhibit. All meat jerky must be cooked to 160 degrees F before drying. Dried products must include the recipe and preparation steps. Jerky not heated to 160 degrees F will not be judged. (Limit of 3)

#### ◆ 4-H FOODS

1. General rules apply.

2. Pre-entry required.

3. Age Groups:

Junior Age 7-9

Intermediate Age 10-13

Senior Age 14-18

4. Awards (CC-1, RCC-1, GC-5, RGC-5):

Class Champion Decorated Food Item

Reserve Class Champion Decorated Food Item

Grand Champion Food Junior

Reserve Grand Champion Food Junior

Grand Champion Food Intermediate



Reserve Grand Champion Food Intermediate  
Grand Champion Food Senior  
Reserve Grand Champion Food Senior  
Grand Champion Educational Exhibit  
Reserve Grand Champion Education Exhibit  
Grand Champion Food Gift Package  
Reserve Grand Champion Gift Package

5. The entire product must be entered and uncut - no half cakes. Exhibit 7 cookies, 7 muffins, 7 bread sticks, etc. Cookies and rolls must be the same shape and same recipe.
6. Entries shall be displayed on foil-covered cardboard or on paper plates and slipped into a food plastic bag. Baked products should be removed from the pan and placed on paper plates or cardboard; otherwise, exhibit in a disposable container. Pans will not be returned (example: glass pie plate).
7. Recipe cards (3" x 5") are required for all food products exhibited including food gift packages.
8. Layer cakes must be two or more 8" or 9" layers, unfrosted.
9. All unfrosted cakes should be exhibited in an upright position with crust showing, except for those cakes made with special designs such as bundt cakes. They should have top crust side down. No mixes should be used.
10. All pies need to be a two crust, pastry or crumb. For food safety purposes, no cream pies will be allowed.
11. Pan size for all quick breads and yeast breads need to be 9" x 5" x 3".
12. For food safety purposes, any food with custard and cream cheese type fillings and frostings, flavored oils, "canned" bread or bread cakes in a jar, or food requiring refrigeration will not be accepted.
13. Exhibitors 7-8 years old will not be eligible to participate at the State Fair.
14. Sandwiches and salads need to be kept cold before judging and must be taken home after judging.
15. All food preparation entries will be considered the property of the 4-H Council. These entries except for a display sample will be sold at the annual 4-H Food Sale. Sale will take place in the 4-H Foods Department in the Ag Building after the food judging has started and last until food is gone. All proceeds go to aid the 4-H Council.
16. A decorated food item must be a food item, not a decorated box.
17. Educational Exhibits - Educational exhibit can be a notebook, poster or recipe file. Recipe file should contain at least 5 recipes and be displayed in box or notebook.
18. Educational Exhibits - If a poster, it must not be larger than 22" x 28". May be a notebook or other display showing and describing something learned, a project activity done, a food-nutrition community service program, etc. Total space required for display must be no more than 12" high by 12" deep and 18" long. NO card table exhibits. The exhibit should relate to things completed in the project in which the member is enrolled. Recipe box or file should contain at least 10 recipes for Level II. Recipe box or file for Level III or IV should show growth within the project. Recipe box or files are not eligible for state fair exhibit.

19. Food Gift Package and or Specialty Food Product - No alcoholic beverages will be accepted. A food gift package must contain at least 3 different non-perishable food items, prepared (not purchased) by the 4-H'er, in a suitable container no larger than 18" x 18" x 18". Prepared food items must have recipes attached with the entry. On the back of the entry card, answer these questions: a) what is the intended use; b) what food safety precautions were taken during and after preparation.

- 41600 Junior Age 7-9 - Food Product (Limit of 5)  
41601 Intermediate Age 10-13 - Non-perishable Food Product (Limit of 5)  
41602 Senior Age 14-18 - Non-perishable Food Product (Limit of 5)  
41603 Intermediate Age 10-13 - Decorated Food Item (Limit of 1)  
41604 Senior Age 14-18 - Decorated Food Item (Limit of 1)  
41605 Age 7-18 - Educational Exhibit (Limit of 3)  
41606 Age 7-18 - Food Gift Package and or Specialty Food Product (Limit of 1)

#### ◆ 4-H FORESTRY

1. General rules apply.
  2. Pre-entry required.
  3. Age Groups:  
Age 7-18
  4. Awards (CC-0, RCC-0, GC-1, RGC-1):  
Grand Champion Forestry  
Reserve Grand Champion Forestry
  5. All leaf exhibits are to be mounted on 8½" x 11" heavy stock paper and placed in loose-leaf binders. (Magnetic or adhesive filler sheets for photographic prints are recommended.) Twigs and fruit collections may be exhibited in whatever manner you choose (maximum exhibit size 2'x 3').
  6. Name, club, age and year in project should be on front cover or in a prominent location.
  7. Leaves should be identified with an appropriate label located near the leaf on the same page. These labels should include (1) the proper common name; (2) location (city and/or county) where collected; (3) date (day, month, year) collected.
  8. Divide specimens into the following two sections: Native Kansas Trees, and Non-Native Trees.
  9. Division A--Jr. 4-H Forester Knowing Trees as Individuals (Leaf Collections) Exhibit one complete leaf where possible. Where leaf is too large, exhibit as much of terminal portions as possible. Sketch in reduced scale the entire leaf and illustrate where the exhibited portion comes from.
  10. Division B--Sr. 4-H Forester
- 41700 Beginning - Exhibit - Exhibit leaves of a minimum of 10 different (at least 5 specimens are new) native Kansas trees, or leaf, twig, and fruit of five different native trees. Can include non-native specimens in addition to the required native Kansas tree specimens. (Limit of 1)  
41701 Intermediate - Leaf Specimens Only - Exhibit leaves of a minimum of 20 (includes at least 10 new in

- addition to those previously exhibited) different native Kansas tree leaves. (Limit of 1)
- 41702 Senior - Exhibit - Exhibit leaves of a minimum of 25 (includes at least 5 new leaves, 5 new twigs, and 5 new fruit of the same species in addition to those previously exhibited) different native Kansas trees (not shrubs) or leaf, twig, and fruit of 10 different trees (includes at least 5 new in addition to those previously exhibited). Can exhibit non-native in addition to the required native Kansas trees. (Limit of 1)
- 41703 Advanced - Exhibit - Exhibit leaves of a minimum of 40 (includes at least 20 new specimens) different native Kansas trees, or leaf, twig, and fruit of 20 different trees (include 10 new plus those from previous exhibits). \*\* Can exhibit non-native in addition to the required native Kansas trees. (Limit of 1)
- 41704 How a Tree Grows - Display - Entry may include a project notebook with 10 or more seeds collected with pictures showing germination study OR a mounting of a thin section of wood cut from the end of a log or top of stump labeled with information such as kind of wood and age of tree when cut OR exhibit an illustration of a how a tree grows. (Limit of 1)
- 41705 Tree Appreciation - Display - Entry may include a research or reporting notebook with no more 10 pages based on the exhibitor's selected tree. This notebook may include sketches, drawings, pictures, a story, or any other things which will help tell you have selected. Junior Forestry Record (P-1089) is the reference manual for this project. (Limit of 1)
- 41706 Growing and Protecting Trees - Display - Display requires project notebook telling about project and pictures before, during, and after planting seedlings. (Limit of 1)
- 41707 Tree Culture - Display - Display requires project notebook showing your project work and includes pictures of before, during and after woodlot improvement. (Limit of 1)
- 41708 How Forests Serve Us - Display - Display collected wood samples (all or partial) and 500 word essay. Wood sample display to be mounted on poster board or any stiff material no larger than 2' wide x 3' high. Essay should be displayed in a covered binder. (Limit of 1)
- 41709 Educational/Creative Exhibit - Exhibit must be directly related to tree identification or forestry. Type of exhibit is open (notebook, poster, collection box, etc.) given a maximum size of 2' x 3'. (Limit of 1)

#### ◆ 4-H GARDEN

1. General rules apply.
2. Pre-entry required.
3. Age Groups:  
Junior Age 7-13  
Senior Age 14-18
4. Awards (CC-0, RCC-0, GC-2, RGC-2):  
Grand Champion Garden Junior  
Reserve Grand Champion Garden Junior  
Grand Champion Garden Senior

Reserve Grand Champion Garden Senior

5. Exhibits do not have to be mature.
6. For State Fair a member may enter up to 8 exhibits, (according to the number qualified at the county fair) each a different vegetable from the classes below. A county fair exhibitor earning a purple ribbon on an out-of-season vegetable (i.e. early peas) is eligible to exhibit another vegetable (i.e. pumpkins) in its place.

41800 Garden Display - Arranged on tray or basket exhibit consists of five different 'fresh' vegetables. Only one variety of a specific vegetable may be exhibited. A dozen small, fresh vegetables such as green beans is suggested for a good display. Also, follow the amounts of vegetables as listed for single exhibits. Shelled vegetables should not be exhibited. (Limit of 1)

- 41801 Beans - 12 Green (Limit of 1)
- 41802 Beans - 12 Wax (Limit of 1)
- 41803 Beans - 12 Purple (Limit of 1)
- 41804 Beets - 5 (Limit of 1)
- 41805 Broccoli - 1 Head (Limit of 1)
- 41806 Cabbage - 1 (Limit of 1)
- 41807 Cantaloupe - 1 (Limit of 1)
- 41808 Carrots - 5 (Limit of 1)
- 41809 Cucumbers - 5 Pickling (Limit of 1)
- 41810 Cucumbers - 5 Slicers (Limit of 1)
- 41811 Eggplant - 1 (Limit of 1)
- 41812 Kohlrabi - 5 (Limit of 1)
- 41813 Lettuce - Leaf in Water (Limit of 1)
- 41814 Lettuce Head - 1 (Limit of 1)
- 41815 Okra - 5 (Limit of 1)
- 41816 Onions - 5 White (Limit of 1)
- 41817 Onions - 5 Yellow (Limit of 1)
- 41818 Onions - 5 Red (Limit of 1)
- 41819 Onions - 5 Green (Limit of 1)
- 41820 Peas - 12 (Limit of 1)
- 41821 Peppers - 5 Red or Green Bell (Limit of 1)
- 41822 Peppers - 5 Hot (Limit of 1)
- 41823 Potatoes - 5 Red (Limit of 1)
- 41824 Potatoes - 5 White (Limit of 1)
- 41825 Potatoes - 5 Sweet (Limit of 1)
- 41826 Pumpkin (Limit of 1)
- 41827 Radishes - 5 White (Limit of 1)
- 41828 Radishes - 5 Red (Limit of 1)
- 41829 Rhubarb - 5 Stalks (Limit of 1)
- 41830 Squash - 1 Summer (Limit of 1)
- 41831 Squash - 1 Winter (Limit of 1)
- 41832 Strawberries - 12 (Limit of 1)
- 41833 Sweet Corn - 5 Ears (Limit of 1)
- 41834 Swiss Chard - Small Bunch in Water (Limit of 1)
- 41835 Tomatoes - 10 Cherry or Pear (Limit of 1)
- 41836 Tomatoes - 5 Red (Limit of 1)
- 41837 Turnips - 5 (Limit of 1)
- 41838 Watermelon - 1 (Limit of 1)
- 41839 Other Vegetable (Limit of 1)
- 41840 Other Fruit (Limit of 1)
- 41841 House Plant - 1 (Limit of 1)

◆ 4-H GEOLOGY

1. General rules apply.
2. Pre-entry required.

3. Age Groups:  
Age 7-18
4. Awards (CC-0, RCC-0, GC-1, RGC-1):  
Grand Champion Geology  
Reserve Grand Champion Geology
5. The exhibit box should be 18" x 24" x 3 1/2" with a plexiglass cover. All specimens are to be arranged across the narrow (18") dimension of the exhibit box, making the exhibit 18" across the top and 24" deep exactly. IF A BOX HAS A SLIDING PLEXIGLASS COVER, it must be removable from the top. Screws, locks, or other devices that would prevent judges from removing cover should not be used.
6. Each Exhibitor is required to identify each display box by placing an identification label bearing name, county, and number of specimens in the upper left-hand corner of the PLEXIGLASS COVER (inside -- use clear double-sided tape to adhere gummed labels) and by attaching a label with the same information on the lower right corner of the box (outside).
7. Exhibitor may enter in both geology and lapidary classes.
8. Exhibitor may show in only one of the first three geology classes. Exhibitor may also show in geology class special exhibit and in the lapidary class.
9. Geology specimens should be labeled with the number of the specimens, date collected, specimen name or description, and locality (county) where collected.
10. Specimens should be mounted in the box by proper groups -- rocks, minerals, fossils.
11. All specimens must be collected from locations in Kansas. Out-of-state specimens will not count in the minimum number for the class, nor will they be considered in the judging.

41900 Beginning Geology - 15 minerals, or fossils collected during the current 4-H year. Limited to one exhibit box 18" x 24" x 3 1/2" with glass cover. Fossils must be identified to the Phylum level. (Limit of 1)

41901 Intermediate Geology - 30 specimens, at least 5 of each. Fifteen must be collected during the current 4-H year. Limited to one exhibit box 18" x 24" x 3 1/2" with glass cover. Fossils must be identified to the Phylum level. (Limit of 1)

41902 Advanced Geology - 45 specimens, at least 5 of each. More than one specimen of the same kind of rock or mineral or species of a fossil may be exhibited if this duplication represents different geological formations. Specimen label must show this distinction (Fort Hays limestone not just limestone; exact species must have different formation names listed on the I.D. card; Composita Brachiopod from Morrill Limestone not just Brachiopod or Composita Brachiopod). Exhibit limited to two boxes 18" x 24" x 3 1/2" with plexiglass cover. Exhibit must include approximately 15 specimens of current year's work. Rocks must be identified by their proper name and type. Fossils must be identified to the Phylum level. (Limit of 1)

41903 Display at least 60 Rocks, Minerals, or Fossils, at Least 5 of Each - More than one specimen of the same kind of rock or mineral or species of a fossil may be exhibited if this duplication represents

different geological formations. Specimen label must show this distinction (Fort Hays limestone not just limestone; exact species Must have different formation names list on the I.D. card; Composita Brachiopoda from Morrill Limestone not just Brachiopoda). Exhibit limited to two boxes 18" x 24" x 3½" with plexiglass cover. Exhibit must include approximately 15 specimens of current year's work. Rocks must be identified by their proper name and type. Fossils must be identified to the Phylum, Class, and Genus levels if possible. (Limit of 1)

- 41904 Special Exhibit - Relating to geology and everyday living, mineral test, rock formation, geological history, species of a fossil, forms of one mineral, a variation of one kind of rock, archaeological artifacts, or Indian artifacts. Exhibit limited to 4 ft of table space. Exhibitor may show in the class regardless of number of times he or she has exhibited at State Fair or whether exhibitor has entries in classes. Exhibitor may also exhibit in lapidary class. (Limit of 1)
- 41905 Display at least 30 Stones and Minerals that will Cut or Polished - Five of the specimens must be Polish 15 of the gemstones by tumbling. Label Lapidary Display -Exhibit at least 6 gemstones and minerals that have received lapidary treatment. Lapidary treatment may consist of tumbling, polishing and end or face or flat lapping. Specimens must represent at least 3 different gemstones and minerals, and include at least 3 cabochons of any size or shape. Three of the specimens must be mounted. Label specimens as appropriate including locality (state) where originated. Exhibitor may also exhibit in any other geology class. (Limit of 1)

#### ◆ 4-H HAND PET

1. General rules apply.
2. Pre-entry required.
3. Age Groups:  
Junior Age 7-13  
Senior Age 14-18
4. Awards (CC-2, RCC-2, GC-1, RGC-1):  
Class Champion Hand Pet Junior  
Reserve Class Champion Hand Pet Junior  
Class Champion Hand Pet Senior  
Reserve Class Champion Hand Pet Senior  
Grand Champion Hand Pet  
Reserve Grand Champion Hand Pet
5. 4-H manuals and guidelines will be followed.
6. 4-H exhibits will be judged at the same time as open class exhibits, but they will not compete against each other.
7. Junior & Seniors will be judged together if there are not enough entries to judge separately at the discretion of the superintendent.
8. All hand pets are pre-judged in the home during pre-fair week.
9. A hand pet may be a bird, guinea pig, hamster or gerbil. NO mice or rats are permitted because of the diseases these species carry.
10. Hand pets must be shown in cages and the exhibitor must be present during judging.

11. A hand pet will be judged on its overall condition and the appropriateness of its cage.

45600 Junior Age 7-13 - Hand Pet (Limit of 3)

45601 Senior Age 14-18 - Hand Pet (Limit of 3)

#### ◆ 4-H HOME ENVIRONMENT

1. General rules apply.
2. Pre-entry required.
3. Age Groups:  
Age 7-18
4. Awards (CC-0, RCC-0, GC-1, RGC-1):  
Grand Champion Home Environment  
Reserve Grand Champion Home Environment
5. All work must be the project of the current year.
6. Projects must be inspected before any improvement has been made.
7. The project will be judged prior to the fair for award placement.
8. Home Improvement - Room Tour will not be eligible to participate at the State Fair.
9. Poster or notebooks may include swatches, colors, stories, photographs, and project records which detail what was accomplished this year with a given indication of long-term plans.

42000 Single Exhibit - An article made or refinished by the 4-H member for the home. Attach a 3"x5" index card explaining how the item was made or refinished, costs involved and how it fits into the color and design of the room. (Limit of 1)

42001 Educational Poster or Display - Posters must be no larger than 22" x 28" poster board. Displays are not to exceed a standard. (Limit of 1)

42002 Notebook (Limit of 1)

42003 Home Improvement - Room Tour (Limit of 1)

#### ◆ 4-H PHOTOGRAPHY

1. General rules apply.
2. Pre-entry required.
3. Age Groups:  
Junior Age 7-13  
Senior Age 14-18
4. Awards (CC-8, RCC-8, GC-2, RGC-2):  
Class Champion Photography  
Reserve Class Champion Photography  
Grand Champion Photography Junior  
Reserve Grand Champion Photography Junior  
Grand Champion Photography Senior  
Reserve Grand Champion Photography Senior
5. Photos exhibited must have been the work of the current year and taken by the exhibitor.
6. Exhibitors may enter photos on any subject matter
7. Photos are to be mounted across the narrow (11") dimension of an 11" x 12.5" sheet of white or cream studio mount. Do not use form core board. Photos mounted on poster board will not be displayed.
8. Remove white border from the enlargement before mounting. All photos must be no larger than 8" x 10" and no smaller than 7" x 9", after trimming.
9. Photos must be mounted with the top edge of the print 1" below the top of the mount. The sides of the print must

be equal distance from the two sides of the mount. Refer to page 33 for mounting diagrams.

10. A permanent mount must be made by using photographic adhesive. You can purchase your mounting board at the Extension office.
11. No lettering is permitted on the front of the mount or on the photo, only on the entry form & back of matte board. No underlay's or borders are to be used. No contact prints on front of mount.
12. To protect exhibits from dust and moisture, place photos in a crystal glassine bag that can be purchased at the extension office. Do not use ziplock bags.
13. On the back of the mount, write; the exhibitor's name, address, location where the photograph was taken and full extension district name and add county name. After your photo is mounted and placed in the glassine bag, attach your entry card to the outside with a paper clip.
14. Photos will not be accepted if they are framed. Please bring your photos mounted and ready for display.
15. Digital Composite Image: Finished photo must be created from two or more original sources created by exhibitor. HDR photos do not qualify for this class Photos will be judged on photographic merit as well as manipulation technique and process. Ribbon placement will be determined by combining the score of each judging section.
16. The black and white class is for black and white prints only. Monochromatic prints, including sepia prints are considered color photos and must be entered in the appropriate color class.

- 42100 Color Photo - 3 Years or Less in Project (Limit of 4)
- 42101 Color Photo - 4-7 Years in Project (Limit of 4)
- 42102 Color Photo - 8 Years or More in Project (Limit of 4)
- 42103 Black and White Photo - 3 Years or Less in Project (Limit of 4)
- 42104 Black and White Photo - 4-7 Years in Project (Limit of 4)
- 42105 Black and White Photo - 8 Years or More in Project (Limit of 4)
- 42106 Digital Composite Image - Photo must be created from two or more originals taken by the exhibitor. Exhibitor must include a second 11 x 12-1/2 matte board (Explanation Board) mounted with standard size prints of the original photos, 3 x 5 card(s) explaining what manipulation was done and a standard size print of the final photo. Optional, may include prints of editing steps. Photos showing editing steps may be layered. Please put name and extension unit on the front of the second board. Explanation boards will be displayed as a group to explain and promote the class. Place both matte boards in the same protective plastic bag. (Limit of 4)
- 42107 Video - Entries must be full motion not a series of still images with pan or zoom motion added by a software program. All content must be the result of the current year's project work. All content must be original and created by the exhibitor(s) unless signed copyright, use and/or performance releases are provided. Entries may be created by an individual or by a team. Talent, computer editing, titles, graphics, animation and music are allowed and recommended.



Entries must be one of the following production types: Instructional, Informational, Documentary, Persuasive/PSA, Story or Entertainment. Length must be no longer than three minutes with the exception of Persuasive/PSA which must either be 30 seconds or 60 seconds. Entries will be evaluated on design characteristics, technical content, production quality, and effectiveness. Entries not adhering to the rules and requirements will be awarded a ribbon one placing lower than the placing determined by the official judges. Videos must be in a DVD standard format, so as to be playable on a laptop computer. (Limit of 4)

#### ◆ 4-H PROJECT POSTERS

1. General rules apply.
2. Pre-entry required.
3. Age Groups:  
Junior Age 7-13  
Senior Age 14-18
4. Awards (CC-0, RCC-0, GC-2, RGC-2):  
Grand Champion Project Poster Junior  
Reserve Grand Champion Project Poster Junior  
Grand Champion Project Poster Senior  
Reserve Grand Champion Project Poster Senior
5. This class is to be used for projects which have no classes in the fair. Example: Reading, Citizenship, Shooting Sports, Leadership.
6. Limit one entry per project.
7. Must be current year's work of project in which the member is enrolled.
8. Posters are to be made on a standard size 22" X 28" foam core board.
9. Each poster must be labeled by placing the entry tag in the lower left corner on the back of the poster with clear tape.

42200 Junior Age 7-13 - Poster (Limit of 5)

42201 Senior Age 14-18 - Poster (Limit of 5)

#### ◆ 4-H SMALL ENGINES

1. General rules apply.
2. Pre-entry required.
3. Age Groups:  
Age 7-18
4. Awards (CC-0, RCC-0, GC-1, RGC-1):  
Grand Champion Small Engine  
Reserve Grand Champion Small Engine

42300 Basic Operation and Maintenance Display - Disassembled Parts - Display on a peg board the mounted, disassembled parts of small gas engine. Parts should be cleaned and labeled. Painting is optional. (Limit of 1)

42301 Basic Operation and Maintenance Display - Care, Maintenance - Display on a board assembly system or method that relates to care, maintenance, engine storage, cleaning, safety, etc. Display should not only include visuals but actual parts for illustration. (Limit of 1)

42302 Power and Design - Disassembled Parts - Peg board display of a mounted and disassembled engine system

- (s) such as a carburetor and fuel system, piston and valve assembly, ignition system. Clean and label all parts. (Limit of 1)
- 42303 Power and Design - Illustrate Another Feature of the Project - Illustrate on pegboard or other mount, another feature of the project such as illustrations about spark plugs, air cleaners, types of fuels and oil used, or illustrate a trouble shooting procedure. Clean and label all parts. Illustrations of other systems. (Limit of 1)
- 42304 Power and Design - Display a Fully Reassembled Small Engine Cleaned and Painted - Display a fully reassembled small engine (engine assembly only), cleaned and painted. List all repairs done along with a cost estimate. Engine should be in operational condition before entry. Any small engine relating to utility or recreation. (Limit of 1)
- 42305 Lawn and Garden Power - Illustrate on Board Another Feature of this Project - Illustrate on board another feature of this project such as systems and maintenance. Emphasis should be placed upon power transmission. All illustrations should be properly cleaned and labeled. (Limit of 1)
- 42306 Lawn and Garden Power - Display a Fully Reassembled Engine System - Display a fully reassembled engine system relating to lawn and garden machinery emphasizing power transmission. Machine should be cleaned and painted as needed. List all costs and repairs done. Machine systems should be operational before entry. (Limit of 1)
- 42307 Lawn and Garden Power - Engine Other than Above - Utility or Recreational Engine - Engine other than above. A utility or recreational engine that can relate to power transmissions. Parts cleaned and painted and should be operational before entry. A costs and repairs should be listed. (Limit of 1)

#### ◆ 4-H SPACE TECH

1. General rules apply.
2. Pre-entry required.
3. Age Groups:  
Junior Age 7-9  
Intermediate Age 10-13  
Senior Age 14-18
4. Awards (CC-0, RCC-0, GC-3, RGC-3):  
Grand Champion Space Tech Junior  
Reserve Grand Champion Space Tech Junior  
Grand Champion Space Tech Intermediate  
Reserve Grand Champion Space Tech Intermediate  
Grand Champion Space Tech Senior  
Reserve Grand Champion Space Tech Senior

#### **Rocket Construction Guidelines**

1. Rockets must be assembled according to instructions and shall not be prefinished or include prefabricated fin assemblies. Rockets of original design must be designed by the exhibitor and cannot be a modification of an existing kit.
2. Rocket assembly must follow generally accepted construction and finishing techniques that produce a safe, attractive, and well performing rocket.
3. Rockets that are not scale models of real launch vehicles

may use any paint and decoration scheme and will not be judged on that scheme.

4. Rockets built as scale models of actual launch vehicles will be judged, in part, on the accuracy and completeness of the paint scheme and decal placement.

### **Display Guidelines**

1. Exhibitors may enter up to three Space Tech – Rocketry exhibits that have been constructed during the current year. An exhibitor may not have more than one entry in the same class.
2. It is strongly encouraged, but not required, that rockets be flown prior to display at the NWKDFE. If selected for the Kansas State Fair, rockets must be flown prior to being exhibited at the Kansas State Fair. Multi-stage rockets will be considered fully flown if just the final stage is flown. Rockets should not be launched if there is a local burn ban in effect, or if winds are >20mph.
3. Each rocket less than 48” long shall be displayed vertically on a solid base not to exceed 4 ¼” thick x 8” square with support rods not extending further than the tip of the highest nose cone. The exhibitors name, county or district, and age must be labeled on top of the base. Each rocket greater than 48” long shall be displayed parallel to the ground with up to 3 notched blocks not to exceed 4” in height, width, or depth. The exhibitors name, county or district, and age must be labeled on top of each block. Launch pads are not acceptable bases.
4. Multi-stage rockets must have all stages included in the display but may be displayed without having the stages connected.
5. Any Rocketry exhibit containing igniters or motors in any form will be immediately disqualified.
6. The report accompanying the rocket will be limited to the current 4-H SpaceTech Rocketry Exhibit Information Form affixed to a 10"x13” envelope. This envelope shall not be attached to the rocket or the display.
7. Rocket kit instructions or original design plans, or a photocopy, will be placed inside the envelope. Any structural modifications made to a rocket must be documented on the Rocket Exhibit Information Form or in the plans. Rockets of original design must include as many pages as is needed to provide detailed instructions similar to those included in a manufactured kit. Rockets of original design and modified rockets must be swing tested for stability prior to launch and shall include up to four additional pages detailing the test(s) performed to ensure stability prior to launch.
8. One or more photos of the rocket at the launch site are required. Photos showing the rocket at the moment of ignition are preferred. Include at least one photo showing rocket construction, preferably with the exhibitor included. Photos will be mounted on one side of an 8 ½” x 11” page and will be placed in the envelope. There will be a minimum of one photo page and up to a maximum of five photo pages allowed. Do not include photos of members catching rockets during recovery as this is an unsafe practice that is not condoned.
9. A Launch Data sheet detailing the specifics of the launch along with the maximum altitude attained by the rocket and the method used to determine it will be included in the envelope.

10. Flight damage must be documented on the construction plans or the Exhibit Information form and will be judged secondary to all other aspects of the rocket.

### **Special Guidelines for High Powered Rockets**

1. For the purpose of Kansas 4-H SpaceTech, a High Powered Rocket is a rocket that meets any of the following criteria:
  - a. Is >2" in diameter, not including fins, AND is >36" long, including fins
  - b. Weighs >1500 grams (53 ounces or 3.3125 pounds) at launch
  - c. Uses a single "E" motor or combination of motors having a total impulse of >20.00 Newton-seconds. (2Ds, 4Cs, 8Bs, etc.)
  - d. Is powered by motors not classified as model rocket motors per NFPA 1122, e.g.:
    - i. Average thrust > 80.00 Newtons
    - ii. Contains > 62.5 grams (2.2ounces) of propellant and are limited to only H and I motors
2. In addition to the information packet completed for all rockets, the exhibitor must complete a High Power Rocket Information Form and place it in the envelope.
3. All rockets in this category will be built and launched by the member under adult supervision.
4. Members will comply with all applicable NAR High Powered Rocket Safety Code and Certification requirements and FAA Regulations.
5. NO rocket may be launched using a single "J" motor or larger, or a combination of motors having a total impulse of >640 Newton-seconds (2Is, 4Hs, 8Gs, etc.).

### **Unmanned Aerial Systems**

1. For 2017, display boards, posters and notebooks are the only unmanned aerial systems exhibits being accepted. In 2018, more classes will be added for UASs.
2. Exhibitor's name, county or district, age, and years in project must be tagged or labeled in a prominent location on the exhibit, educational display, notebook, and/or poster.
3. Unmanned Aerial Systems that include or depict weaponry of any kind will be disqualified.
4. See the last section for full details about exhibiting posters, display boards and notebooks.

### **Educational Exhibits - Posters, Notebooks, and Display Boards**

1. Purpose: Allow 4-Hers to explore SpaceTech outside the bounds of traditional projects for rockets and unmanned aerial systems. All posters, notebooks and display boards are listed in this section and have been removed from the individual sections to save space.
2. For notebooks, display boards, and posters, no additional exhibit information is required; no manila envelope is needed for these exhibits.
3. Exhibits in posters, notebooks and display boards may not be just a static project, but must contain substantial supporting educational materials in the form of posters, notebooks, or display boards, etc.
4. Educational display boards, posters and notebooks should be creative and showcase details about the knowledge

learned in the project during the current 4-H year. Value is placed on youth who can demonstrate how their skills have increased while completing the project. Each exhibit will be judged on uniqueness, creativity, neatness, accuracy of material, knowledge gained, and content. An exhibit judging score sheet will be available at [www.kansaspacetechnology.com](http://www.kansaspacetechnology.com). For example, a rocket may have crashed and/or is highly damaged that can't be launched again may be made into an educational display or poster that tells a great story with many lessons learned.

5. Follow copyright laws, citing all sources of information in a standard notation on the "4-H Educational Rocketry Exhibit Information Form." Additional pages can be added inside the Information Packet and should be labeled "Citations." Sources of scientific information must be cited on the front of your exhibit, including all posters and educational display boards.
6. Educational displays are not to exceed a standard commercial 3' x 4' tri-fold display board. No cardboard table exhibits will be allowed. Care should be taken to use durable materials that will withstand the Fair environment.
7. "Construction Kits" that are part of Educational displays must be contained in cases (tackle boxes, sealable containers, etc.) that may not be larger than 1' X 2' X 2' and must have a latch which securely keeps all components contained in the "Construction Kits". Other components are to adhere to appropriate dimensions as stated elsewhere.
8. Educational project notebooks must be organized in a 3-ring binder.
9. Educational posters must be no larger than a 20" X 30" poster board. Exhibitors are encouraged to laminate all posters and diagrams or cover them with clear plastic film. Any three dimensional display exhibits may not be thicker than 1".
10. Engines and igniters in rockets ARE NOT permitted with the exhibit and constitute an immediate disqualification. This is for safety reasons and includes both spent and live engines.
11. Exhibitor's name, county or district, age, and year(s) in project must be tagged or labeled in a prominent location on the educational display, notebook, "Construction Kit," and/or poster.
12. Exhibits should possess the following qualities (in no particular order):
  - a. A central theme
  - b. What you want others to learn
  - c. Be designed and constructed in a manner befitting the exhibit
  - d. Be something you are interested in
  - e. Be related to model or high power rocketry
  - f. And those characteristics described above.

42400 Junior Age 7-9 - Rocket Made from Kit (Limit of 1)

42401 Intermediate Age 10-13 - Rocket Made from Kit (Limit of 1)

42402 Intermediate Age 10-13 - Original Design (Limit of 1)

42403 Senior Age 14-18 - Rocket Made from Kit (Limit of 1)

- 42404 Senior Age 14-18 - Rocket of Original Design, Including those using alternative skins (Limit of 1)
- 42405 Senior Age 14-18 - Rocket Made from Kit or Original Design - High Power (Limit of 1)
- 42406 Exhibitors Age 11-18 - Rocket Designed by 2 or More Exhibitors (Limit of 1)
- 42407 Junior Age 7-9 - Rocketry Educational Display, Notebook, or Poster Board (Limit of 1)
- 42408 Intermediate Age 10-13 - Rocketry Educational Display, Notebook, or Poster Board (Limit of 1)
- 42409 Senior Age 14-18 - Rocketry Educational Display, Notebook, or Poster Board (Limit of 1)
- 42410 Unmanned Aerial Systems Rocketry Educational Display, Notebook, or Poster Board (Limit of 1)

◆ **4-H STYLE REVUE - CONSTRUCTED GARMENTS**

1. General rules apply.
2. Pre-entry required.
3. Age Groups:  
Junior Age 7-13  
Senior Age 14-18
4. Awards (CC-0, RCC-0, GC-2, RGC-2):  
Grand Champion Style Revue - Constructed Garments Junior  
Reserve Grand Champion Style Revue - Constructed Garments Junior  
Grand Champion Style Revue - Constructed Garments Senior  
Reserve Grand Champion Style Revue - Constructed Garments Senior
5. Open to youth enrolled in a constructed clothing project. The exhibitor may model all garments they enter for construction judging at the fair (All clothing must have been made by the exhibitor with the exception of under garments and accessories).
6. Grand & Reserve Champion with a 4-H age of 14-18, will be selected to represent Sherman County at the State Fair Style Revue.
7. Children's garments made by a youth may be modeled by the child for whom the garment was made.

- 42500 Level I - Style Revue (Limit of 1)
- 42501 Level II - Style Revue (Limit of 1)
- 42502 Level III - Style Revue (Limit of 1)
- 42503 Level IV - Style Revue (Limit of 1)
- 42504 Constructed Knitted Garment - Style Revue (Limit of 1)
- 42505 Constructed Crocheted Garment - Style Revue (Limit of 1)

◆ **4-H STYLE REVUE - PURCHASED GARMENTS**

1. General rules apply.
2. Pre-entry required.
3. Age Groups:  
Junior Age 7-13  
Senior Age 14-18
4. Awards (CC-0, RCC-0, GC-4, RGC-4):  
Grand Champion Style Revue - Purchased Garments Junior Boy  
Reserve Grand Champion Style Revue - Purchased Garments Junior Boy  
Grand Champion Style Revue - Purchased Garments

Junior Girl  
 Reserve Grand Champion Style Revue - Purchased  
 Garments Junior Girl  
 Grand Champion Style Revue - Purchased Garments  
 Senior Boy  
 Reserve Grand Champion Style Revue - Purchased  
 Garments Senior Boy  
 Grand Champion Style Revue - Purchased Garments  
 Senior Girl  
 Reserve Grand Champion Style Revue - Purchased  
 Garments Senior Girl

5. Open to youth enrolled in Buymanship project.
6. Garments must be purchased for the 4-H project or made by another individual for the 4-H'er if the fabric and pattern were chosen by the 4-H'er.
7. Everything which is commonly considered an outer garment (vest, jacket, skirt, pants, coat, etc.) must be purchased by the 4-H'er or constructed by another person. A sweater, blouse or shirt can be purchased or made. Majority of the outfit must be purchased (not borrowed) and modeled by the 4-H'er.
8. Participates not showing at the public style revue will not be considered for champion placing.
9. Grand & Reserve Champion boy and Grand & Reserve Champion girl with a 4-H age of 14-18, will be selected to represent Sherman County at the State Fair Style Revue.

- 42600 Junior Age 7-13 - Buymanship Boy - Style Revue  
 (Limit of 2)  
 42601 Junior Age 7-13 - Buymanship Girl - Style Revue  
 (Limit of 2)  
 42602 Senior Age 14-18 - Buymanship Boy - Style Revue  
 (Limit of 2)  
 42603 Senior Age 14-18 - Buymanship Girl - Style Revue  
 (Limit of 2)

#### ◆ 4-H WILDLIFE

1. General rules apply.
2. Pre-entry required.
3. Age Groups:  
 Age 7-18
4. Awards (CC-0, RCC-0, GC-1, RGC-1):  
 Grand Champion Wildlife  
 Reserve Grand Champion Wildlife
5. Type of exhibit in this division is open to notebooks, posters, picture story, display boards, etc. (Notebooks may be a journal showing habitat development, bird watching tips, information on endangered species or any in-depth study in the wildlife area. The display might include different flies the exhibitor has, or different fish found in the Exhibitors County, etc.)
6. Name, club, age and year in project should be in a prominent location on the exhibit.
7. Exhibitors must comply with State and Federal Laws. It is illegal to possess threatened or endangered wildlife, or the feathers, nests or eggs of non-game birds. Game birds and game animals taken legally during an open season may be used. The use of live wild animals in educational exhibits is prohibited.

- 42700 Notebook - Contents pertain to some phase, results,

story, or information about the wildlife project.

(Limit of 1)

42701 Educational Poster - Must be related to something learned in the Wildlife project. Posters are to be made on a standard size cardboard/poster board 22" x 28" or foam core board. (Limit of 1)

42702 Educational Display - Must be directly related to the wildlife project. Maximum size for the display is a standard tri-fold display board no larger than 3' x 4'. (Limit of 1)

#### ◆ 4-H WOODWORKING

1. General rules apply.
2. Pre-entry required.
3. Age Groups:  
Junior Age 7-13  
Senior Age 14-18
4. Awards (CC-0, RCC-0, GC-2, RGC-2):  
Grand Champion Woodworking Junior  
Reserve Grand Champion Woodworking Junior  
Grand Champion Woodworking Senior  
Reserve Grand Champion Woodworking Senior
5. Designate on entry if article is original or kit construction. The plan from which it was constructed must be with the article exhibited. The plan may be a photocopy, the actual pattern, or a scale drawing. It must be complete and accurate to the extent that a duplicate article could be built using the plan as a guide.
6. Only small exhibits qualifying for State Fair will be taken by the Extension Office.

42800 Woodwork Article for Farm or Shop Use (Limit of 3)

42801 Lawn Furniture (Limit of 1)

42802 Household Furniture (Limit of 1)

42803 Other Woodwork Articles (Limit of 1)

42804 Piece of Repaired and Refinished Furniture (Limit of 1)

42805 Any Article Made From a Kit (Limit of 1)

#### ◆ 4-H HORSE SHOW

1. General rules apply.
2. Pre-entry required.
3. Age Groups:  
Junior Age 7-9  
Intermediate Age 10-13  
Senior Age 14-18
4. Awards (CC-55, RCC-55, GC-14, RGC-14):  
Class Champion Horse Halter  
Reserve Class Champion Horse Halter

Class Champion Horse Performance

Reserve Class Champion Horse Performance

Class Champion Horse Speed

Reserve Class Champion Horse Speed

Class Champion Horse Versatility

Reserve Class Champion Horse Versatility

Grand Champion Horse Halter Mare

Reserve Grand Champion Horse Halter Mare

Grand Champion Horse Halter Gelding



Reserve Grand Champion Horse Halter Gelding

Grand Champion Horse Performance Junior

Reserve Grand Champion Horse Performance Junior

Grand Champion Horse Performance Intermediate

Reserve Grand Champion Horse Performance  
Intermediate

Grand Champion Horse Performance Senior

Reserve Grand Champion Horse Performance Senior

Grand Champion Horse Speed Junior

Reserve Grand Horse Champion Speed Junior

Grand Champion Horse Speed Intermediate

Reserve Grand Champion Horse Speed Intermediate

Grand Champion Horse Speed Senior

Reserve Grand Champion Horse Speed Senior

Grand Champion Horse Showmanship Junior

Reserve Grand Champion Horse Showmanship Junior

Grand Champion Horse Showmanship Intermediate

Reserve Grand Champion Horse Showmanship  
Intermediate

Grand Champion Horse Showmanship Senior

Reserve Grand Champion Horse Showmanship Senior

Grand Champion Horse Versatility Junior

Reserve Grand Champion Horse Versatility Junior

Grand Champion Horse Versatility Intermediate

Reserve Grand Champion Horse Versatility Intermediate

Grand Champion Horse Versatility Senior

Reserve Grand Champion Horse Versatility Senior

5. Horses are shown at the owner's risk.
6. All entrants must be enrolled in the 4-H horse project to exhibit.
7. 4-H members must attend a minimum of one (1) horse project meeting, one (1) horse project practice and completed the safety training.
8. Horse ID forms must be turned in to the Sherman County Extension Office by May 1st to be eligible at the 4-H Show at the fair. No exceptions.
9. All 4-H horses must be accompanied with completed 4-H ID forms upon arrival at the fairgrounds.
10. A single horse may not be entered or ridden in the same age division, even though it is jointly owned by two members of the same family.
11. Two members in the same family will be permitted to take the same horse as their 4-H horse project provided each individual case has been identified by May 1st.
12. Project animals cannot be switched after pre fair entry. Potential hardship cases must be reported to the project leaders. The situation is to be reviewed by the fair board for consideration before fair. Any horse considered must have been ID by May 1st in the 4-H'ers name.
13. Each horse must be exhibited or ridden by the owner except in a halter class in which the owner has more than one horse entered. In this case, the horse must be shown by another Sherman County 4-H member.
14. Stallion only may show in the weanling class. No other stallions allowed on grounds.
15. Each participant may only enter one horse in each performance event, exception is versatility.
16. All horses must be on the grounds 30 minutes prior to the class entered.

## **Halter Class**

1. Shown by breed only if three or more of a breed are entered in a class.
2. Stock is defined as a horse of a type that is well suited for working with livestock, particularly cattle. To include the American Quarter Horse, American Paint Horse, Appaloosa, or Australian Stock Horse, as well breeds or types of light riding horse of a phenotype. Among breeds with stock horse-type representatives include, Arabian, Morab, Morgan, Mustang, Pony of America, Quarab.
3. Non-Stock is defined as a horse of a type that is not usually suited for working with livestock but has other attributes, to include but not limited to Pony Breeds, Draft Horse Breeds, and Gated Horse Breeds.
4. A weanling is a horse under 1 year of age. A junior horse is a horse yearling to 5 years of age. Senior horse is a horse over 5 years of age. All ages as of January 1st.

- 42900 Stock Weanling Mares (Limit of 1)
- 42901 Stock Junior Mares (Limit of 1)
- 42902 Stock Senior Mares (Limit of 1)
- 42903 Non-Stock Weanling Mares (Limit of 1)
- 42904 Non-Stock Junior Mares (Limit of 1)
- 42905 Non-Stock Senior Mares (Limit of 1)
- 42906 Stock Weanling Geldings - Stallions (Limit of 1)
- 42907 Stock Junior Geldings (Limit of 1)
- 42908 Stock Senior Geldings (Limit of 1)
- 42909 Non-Stock Weanling Geldings - Stallions (Limit of 1)
- 42910 Non-Stock Junior Geldings (Limit of 1)
- 42911 Non-Stock Senior Geldings (Limit of 1)

## **Performance**

1. Scoring, patterns, performance will be those in the "Handbook for Kansas 4-H Horse Shows and Events".
2. The judge will divide the placing as follows: Blue, Red, White. Placing will not follow the "Kansas 4-H Horse Show rule Book", instead will follow those of the Northwest Kansas District Free Fair.
3. Only stock western pleasure class applies toward overall scoring.
4. Versatility does not apply toward overall scoring.
5. There is a 5 second penalty for each pole or barrel tipped over during the competition.

- 43000 Junior Age 7-9 - Bareback Equitation (Limit of 1)
- 43001 Intermediate Age 10-13 - Bareback Equitation (Limit of 1)
- 43002 Senior Age 14-18 - Bareback Equitation (Limit of 1)
- 43003 Junior Age 7-9 - English Equitation (Limit of 1)
- 43004 Intermediate Age 10-13 - English Equitation (Limit of 1)
- 43005 Senior Age 14-18 - English Equitation (Limit of 1)
- 43006 Junior Age 7-9 - English Pleasure (Limit of 1)
- 43007 Intermediate Age 10-13 - English Pleasure (Limit of 1)
- 43008 Senior Age 14-18 - English Pleasure (Limit of 1)
- 43009 Junior Age 7-9 - Hunter Over Fences (Limit of 1)
- 43010 Intermediate Age 10-13 - Hunter Over Fences (Limit of 1)
- 43011 Senior Age 14-18 - Hunter Over Fences (Limit of 1)

- 43012 Junior Age 7-9 - Western Pleasure (Limit of 1)
- 43013 Intermediate Age 10-13 - Western Pleasure (Limit of 1)
- 43014 Senior Age 14-18 - Western Pleasure (Limit of 1)
- 43015 Junior Age 7-9 - Non-Stock Western Pleasure (Limit of 1)
- 43016 Intermediate Age 10-13 - Non-Stock Western Pleasure (Limit of 1)
- 43017 Senior Age 14-18 - Non-Stock Western Pleasure (Limit of 1)
- 43018 Junior Age 7-9 - Western Horsemanship (Limit of 1)
- 43019 Intermediate Age 10-13 - Western Horsemanship (Limit of 1)
- 43020 Senior Age 14-18 - Western Horsemanship (Limit of 1)
- 43021 Junior Age 7-9 - Reining (Limit of 1)
- 43022 Intermediate Age 10-13 - Reining (Limit of 1)
- 43023 Senior Age 14-18 - Reining (Limit of 1)
- 43024 Junior Age 7-9 - Pole Bending (Limit of 1)
- 43025 Intermediate Age 10-13 - Pole Bending (Limit of 1)
- 43026 Senior Age 14-18 - Pole Bending (Limit of 1)
- 43027 Junior Age 7-9 - Barrel Racing (Limit of 1)
- 43028 Intermediate Age 10-13 - Barrel Racing (Limit of 1)
- 43029 Senior Age 14-18 - Barrel Racing (Limit of 1)
- 43030 Junior Age 7-9 - Flags (Limit of 1)
- 43031 Intermediate Age 10-13 - Flags (Limit of 1)
- 43032 Senior Age 14-18 - Flags (Limit of 1)
- 43033 Junior Age 7-9 - Trail (Limit of 1)
- 43034 Intermediate Age 10-13 - Trail (Limit of 1)
- 43035 Senior Age 14-18 - Trail (Limit of 1)
- 43036 Junior Age 7-9 - Working Ranch Horse (Limit of 1)
- 43037 Intermediate Age 10-13 - Working Ranch Horse (Limit of 1)
- 43038 Senior Age 14-18 - Working Ranch Horse (Limit of 1)

### **Showmanship**

- 43100 Junior Age 7-9 - Horse Showmanship (Limit of 1)
- 43101 Intermediate Age 10-13 - Horse Showmanship (Limit of 1)
- 43102 Senior Age 14-18 - Horse Showmanship (Limit of 1)

### **Versatility**

1. Riders must use the same horse in each of the three classes, English Equitation, Horsemanship and Barrels.
2. Each exhibitor will be allowed to ride pre-determined horse in the corresponding class.
3. All class rules will follow those of the "Kansas 4-H Horse Show Rule Book".
4. Points will be kept for each of the classes and total to determine the Versatility Champion for each age division.
5. Versatility does not apply to overall high point scoring.

- 43200 Versatility (Limit of 1)

### **◆ 4-H LIVESTOCK**

1. General rules apply.
2. Pre-entry required.
3. Age Groups:
  - Junior Age 7-9
  - Intermediate Age 10-13

Senior Age 14-18

4. Awards (CC-13, RCC-13, GC-33, RGC-33):

Class Champion Breeding Beef  
Reserve Class Champion Breeding Beef  
Class Champion Breeding Goat  
Reserve Class Champion Breeding Goat  
Class Champion Breed Sheep  
Reserve Class Champion Breeding Sheep  
Class Champion Breeding Swine  
Reserve Class Champion Breeding Swine  
Class Champion Dairy Beef  
Reserve Class Champion Dairy Beef  
Class Champion Dairy Goat  
Reserve Class Champion Dairy Goat  
Class Champion Market Beef  
Reserve Class Champion Market Beef  
Class Champion Market Goat  
Reserve Class Champion Market Goat  
Class Champion Market Sheep  
Reserve Class Champion Market Sheep  
Class Champion Market Swine  
Reserve Class Champion Market Swine  
Class Champion Catch-It-Pig Swine  
Reserve Class Champion Catch-It-Pig Swine  
Class Champion Poultry  
Reserve Class Champion Poultry  
Class Champion Rabbit  
Reserve Class Champion Rabbit

Grand Champion Breeding Beef  
Reserve Grand Champion Breeding Beef  
Grand Champion Breeding Goat  
Reserve Grand Champion Breeding Goat  
Grand Champion Breeding Sheep  
Reserve Grand Champion Breeding Sheep  
Grand Champion Breeding Swine  
Reserve Grand Champion Breeding Swine

Grand Champion Bucket Calf  
Reserve Grand Champion Bucket Calf

Grand Champion Dairy Beef  
Reserve Grand Champion Dairy Beef  
Grand Champion Dairy Goat  
Reserve Grand Champion Dairy Goat

Grand Champion Market Beef  
Reserve Grand Champion Market Beef  
Home Grown Market Beef  
Rate of Gain Market Beef  
Grand Champion Market Goat  
Reserve Grand Champion Market Goat  
Home Grown Market Goat  
Rate of Gain Market Goat  
Grand Champion Market Sheep  
Reserve Grand Champion Market Sheep  
Home Grown Market Sheep  
Rate of Gain Market Sheep  
Grand Champion Market Swine  
Reserve Grand Champion Market Swine  
Home Grown Market Swine  
Rate of Gain Market Swine

Grand Champion Poultry  
Reserve Grand Champion Poultry  
Grand Champion Rabbit  
Reserve Grand Champion Rabbit

Grand Champion Sheep Lead Junior  
Reserve Grand Champion Sheep Lead Junior  
Grand Champion Sheep Lead Senior  
Reserve Grand Champion Sheep Lead Senior

Grand Champion Beef Showmanship Junior  
Reserve Grand Champion Beef Showmanship Junior  
Grand Champion Beef Showmanship Intermediate  
Reserve Grand Champion Beef Showmanship  
Intermediate

Grand Champion Beef Showmanship Senior  
Reserve Grand Champion Beef Showmanship Senior

Tri-State Royal Champion Participant Beef  
Grand Champion Goat Showmanship Junior  
Reserve Grand Champion Goat Showmanship Junior  
Grand Champion Goat Showmanship Intermediate  
Reserve Grand Champion Goat Showmanship  
Intermediate

Grand Champion Goat Showmanship Senior  
Reserve Grand Champion Goat Showmanship Senior

Tri-State Royal Champion Participant Goat  
Grand Champion Poultry Showmanship Junior  
Reserve Grand Champion Poultry Showmanship Junior  
Grand Champion Poultry Showmanship Intermediate  
Reserve Grand Champion Poultry Showmanship  
Intermediate

Grand Champion Poultry Showmanship Senior  
Reserve Grand Champion Poultry Showmanship Senior

Grand Champion Rabbit Showmanship Junior  
Reserve Grand Champion Rabbit Showmanship Junior  
Grand Champion Rabbit Showmanship Intermediate  
Reserve Grand Champion Rabbit Showmanship  
Intermediate

Grand Champion Rabbit Showmanship Senior  
Reserve Grand Champion Rabbit Showmanship Senior

Grand Champion Sheep Showmanship Junior  
Reserve Grand Champion Sheep Showmanship Junior  
Grand Champion Sheep Showmanship Intermediate  
Reserve Grand Champion Sheep Showmanship  
Intermediate

Grand Champion Sheep Showmanship Senior  
Reserve Grand Champion Sheep Showmanship Senior

Tri-State Royal Champion Participant Sheep  
Grand Champion Swine Showmanship Junior  
Reserve Grand Champion Swine Showmanship Junior  
Grand Champion Swine Showmanship Intermediate  
Reserve Grand Champion Swine Showmanship  
Intermediate

Grand Champion Swine Showmanship Senior  
Reserve Grand Champion Swine Showmanship Senior

Tri-State Royal Champion Participant Swine

5. The livestock shows will be a no fit show, "Blow and Show". No fit, at the Northwest Kansas District Free Fair is defined as using no adhesive, glue, paint, creams, or powder products. Anything used to alter or enhance an animal's performance or look is illegal. Animals using show products will not be allowed to enter the show ring.

6. All market animals must have an identification tag. Breeding and dairy animals are strongly recommended to have an identification tag, but not required.
7. The superintendents will assign stalls and pens and offer supervision of the livestock exhibits. All animals must be housed in barns. Bedding must be used in pens or stalls except in the beef barn which is bedded in sand. Bedding will be furnished one time.
8. Any exhibitor not providing feed and water for their animal during the fair will lose the right to sell any animal in the sale and forfeit all prize money and/or awards.
9. No livestock in barns before 8:00 a.m. Monday of fair. All animals should be in place by 8:00 a.m. the day of weigh in. All animals need to remain in the barn until at least Friday 12:00 noon at the end of fair. If an animal needs to leave early for whatever reason the decision must be approved unanimously by the superintendent, fair board, and the extension office.
10. Any animal weighing less than minimum or more than maximum may take as many trips as needed across the scale to make weight until scale is closed. Animals should be clean and free of debris. Weight limit will be strictly enforced by the Northwest Kansas District Free Fair board. Producer certification forms are due at time of weigh in for every animal.
11. Weigh in will be conducted at the discretion of the superintendent in an orderly fashion. If an exhibitor chooses to waive his/her spot in line (exhibitor must notify superintendent), the exhibitor must wait until all other animals are weighed and weigh in at the end.
12. Any animal that does not make weight (over or under) can show in the show but cannot sell or participate in the grand drive. Only those meeting the weight requirements will be allowed to sell in the 4-H livestock sale. Others may sell at a floor price if a bid can be obtained for those animals.
13. If the 4-H'er is unable to attend a show, another Sherman County 4-H member can show in their place. If exhibitor has more than one animal in the same weight class, a Sherman County 4-H member must show the other animal. This applies to all species, all classes, and all shows.
14. Exhibitor can only transfer an animal from exhibitor with in the immediate family because of sickness or death with the animal. Transfer must be approved unanimously by the superintendent, fair board, and the extension office.
15. All animals are subject to examination by the exhibition staff or their representatives, and shall be free of clinical signs of infectious or contagious disease.
16. Each exhibitor must care for and groom his or her own animal and may use only the assistance of a family member, Sherman County project leader, or another Sherman County 4-H member who is an exhibitor at this year's livestock show. No hired professional groomers will be allowed. This rule will be strictly enforced and any exhibitor violating it will have their animal in questions eliminated from competition.
17. The same animal cannot be shown in both market and breeding classes. Breeding classes must have registration papers in the name of the exhibitor or show proof of application for registry. Health papers for breeding

animals must be available if requested.

18. First and second blues places in each class are eligible to compete for champion and reserve champion market animal regardless of class size, if the judge feels it is a worthy entry.
19. Pee Wees are recommended to be two years old or older and can manage in the ring by themselves.
20. 4-H Homegrown Livestock - The purpose is to give an opportunity for locally produced animals to be used as projects and receive recognition. The animals must be bred, managed, and produced by a Sherman County livestock operator. Homegrown determination needs to be made at spring weigh-in. Homegrown awards are determined during the final drive of each market class. Breeding animals are not eligible.
21. Tri-State Royal Showman representative for the county will be designated for each specie by the judge at the end of the showmanship judging. Champions of the three age divisions will return to the ring for judging.
22. All grand champion showmanship in beef, swine, sheep, goat, and horse will be eligible to compete in the Round Robin Show. If for some reason the grand champion showmanship cannot show the reserve grand champion showmanship in that specific species and age group will be eligible. If both the grand and reserve champion showmanship cannot show an alternate will be eligible. The alternate will be selected by the judge during showmanship. 4-H'er must show animal that won showmanship.

#### **4-H Livestock Sale**

1. Each exhibitor will be eligible to sell only one market beef, one market sheep, one market goat, and one market swine. All other exhibits are not eligible. Exhibitors must sell their highest placing animal, but may substitute the next highest placing animal if he/she guarantees to exhibit the animal at a major approved show or wishes to retain female animal for breeding. Lightest weight animal will be used; member won't be able to sell a higher weight than the original animal. If an animal brought to the fair makes necessary (healthy) weight limit, but is not shown, the exhibitor loses the right to sell the animal.
2. It is the responsibility of the 4-H member to submit the appropriate paperwork to specify which animal they are going to sell at the 4-H livestock sale as soon as possible following the show, but no later than Thursday 12:00 noon.
3. Grand and reserve champions of all species will sell at the beginning of the 4-H livestock sale. The sale rotation order for that year will be followed for the grand and reserve as well as the sale of the other animals.
4. Livestock Sale Rotation Order - The specie that is in the top position will rotate to the bottom position and all others will move up accordingly. 4-H livestock sale order can be found in the appendix of this book.
5. The Northwest Kansas District Free Fair Board has determined that if an animal goes through the sale that it is not to be made available for re-sale. What happens to the animal is to be the first choice of the buyer (ship to sale barn, send to a locker, or take home). If anyone wants to buy an animal for breeding purposes, they must go through the superintendent and the appropriate

paperwork is to be filed with the superintendent and the clerks. Any corrections or questions should be dealt with only after the conclusion of the sale.

6. Market animals will be released and shipped at the discretion of the superintendent. The Northwest Kansas District Free Fair Board will do its best to arrange loads for delivery to lockers, but don't always count on that. You may have to deliver it yourself. Animals sold during the 4-H livestock sale will take priority, extra animals will follow. The Northwest Kansas District Free Fair Board is still planning on making shipping arrangements for animals that are shipped to the sale barn at floor price.

### **Herdsmanship Award**

1. General Information. All livestock and small animal exhibitors are automatically entered into the herdsmanship contest as a club. This is not an individual contest. It is vital that our 4-H'ers learn the importance of properly taking care of animals, keeping the barns clean and presentable, and working together as a team.
2. Judging. There will be a separate award for each barn; Beef, Sheep, Goat, Swine, Poultry, and Rabbit. Herdsmanship will be checked daily for the duration of the fair with no designated time of day each day. The judging committee will be superintendents from each of the livestock projects listed previously and one representative from the fair board. The winner of each barn will be selected during the afternoon of fair on Friday. Awards will be presented during the 4-H Livestock Sale. Checks will not be issued until the completion of the fair and all barns are clean. A club failing to properly clean up after fair will forfeit their award.
3. Responsibility. Herdsmanship duties are the responsibility of all exhibitors and club members rather than leaders, advisors, or parents. If an exhibitor is going to be gone for any reason, it is their responsibility to ask another club member to water, feed, and care for their animals.
4. Basis of scoring. The herdsmanship judges will use a scoring guide in judging the contest.
5. Award. An award of \$100 per barn will be given. A club has the ability to win from \$100 to \$600 in herdsmanship awards at the fair. Each barn will be judged separately.

### **Breeding Beef**

1. Any breed or cross breeds will be eligible to compete.
2. Upon the decision of the show superintendent entries will be placed in classes by age with the day of judging being the base date.
3. All beef must be penned in the designated areas.
4. All beef exhibits must be shown haltered.

43300 Breeding Heifer 0-24 Months (Limit of 2)

43301 Bull Calf (Limit of 2)

43302 Heifer Calf (Limit of 2)

43303 Cow and Calf (Limit of 2)

### **Breeding Goat**

1. Any breed or cross breeds will be eligible to compete.



2. Upon the decision of the show superintendent entries will be placed in classes by age with the day of judging being the base date.
3. All goats must be penned in the designated areas.
4. Goats must be shown with all four feet on the ground. Exhibitors may use a collar, a collar with a short lead, or a halter when showing. Medium (3mm or smaller) pinch collar will be allowed.
5. No bucks of any age will be allowed on the grounds. Only does can show.
6. Horns should be tipped and rounded.
7. Caseous Lymphdenitis: All goats must be inspected and have no visible signs of this condition.

- 43400 Junior Doe 0-6 Months (Limit of 2)  
 43401 Intermediate Doe 6-12 Months (Limit of 2)  
 43402 Yearling Doe 12-24 Months (Limit of 2)  
 43403 Senior Doe 24-36 Months (Limit of 2)  
 43404 Senior Doe 36 Months Plus (Limit of 2)

### **Breeding Sheep**

1. Any breed or cross breeds will be eligible to compete.
2. Upon the decision of the show superintendent entries will be placed in classes by age with the day of judging being the base date.
3. All sheep must be penned in the designated areas.

- 43500 Ram Born Before 1-1 Current Year (Limit of 2)  
 43501 Ram Lamb Born After 1-1 or 3-1 Current Year (Limit of 2)  
 43502 Ewe Born Before 1-1 Current Year (Limit of 2)  
 43503 Ewe Lamb Born After 1-1 or 3-1 Current Year (Limit of 2)  
 43504 Flock 1 Ram and 2 Ewe Lambs (Limit of 2)

### **Breeding Swine**

1. Any breed or cross breeds will be eligible to compete.
2. Upon the decision of the show superintendent entries will be placed in classes by age with the day of judging being the base date.
3. All swine must be penned in the designated areas.

- 43600 Breeding Gilt Born After 1-1 Current Year (Limit of 2)

### **Bucket Calf**

1. This project is for exhibitors between 7 and 12 years of age. Exhibitor must not have passed their 12th birthday by 1-1 of the current year.
2. Any breed or cross breeds will be eligible to compete.
3. Calves entered must be calved after 1-1 of the current year.
4. Members must obtain calves at least 90 days prior to the fair. There is no fair sale of bucket calves, but they may be kept and exhibited in the appropriate class at the following fair.
5. Members will be judged on: Over-all grooming appearance of their animal (clean, brushed, trimmed, etc.) - 25%; Ease at which member has worked with, halter broken, can lead and control the animal - 25%; Knowledge of their project - 50%
6. All beef exhibits must be shown haltered.

43700 Bucket Calf (Limit of 1)

### **Dairy Beef**

1. Any breed or cross breeds will be eligible to compete.
2. Dairy beef will be shown by breeds: Brown Swiss, Guernsey, Holstein, Ayrshire, Jersey, Milking Shorthorn. Three of a breed makes a class if not enough for a class they will show in AOB.
3. All beef must be penned in the designated areas.
4. All beef exhibits must be shown haltered.

43800 Bull Calf (Limit of 2)

43801 Heifer Calf (Limit of 2)

43802 Yearling Bull (Limit of 2)

43803 Yearling Heifers (Limit of 2)

43804 Two-Year Old Heifers (Limit of 2)

43805 Cows (Limit of 2)

### **Dairy Goat**

1. Any breed or cross breeds will be eligible to compete.
2. Upon the decision of the show superintendent entries will be placed in classes by age with the day of judging being the base date.
3. All goats must be penned in the designated areas.
4. Goats must be shown with all four feet on the ground. Exhibitors may use a collar, a collar with a short lead, or a halter when showing. Medium (3mm or smaller) pinch collar will be allowed.
5. No bucks of any age will be allowed on the grounds. Only does can show.
6. Horns should be tipped and rounded.
7. Caseous Lymphdenitis: All goats must be inspected and have no visible signs of this condition.

43900 Junior Doe 0-6 Months (Limit of 2)

43901 Intermediate Doe 6-12 Months (Limit of 2)

43902 Yearling Doe 12-24 Months (Limit of 2)

43903 Senior Doe 24-36 Months (Limit of 2)

43904 Senior Doe 36 Months Plus (Limit of 2)

### **Market Beef**

1. To be eligible to show, all market beef must weigh a minimum weight of 1,050 pounds. There is no maximum weight. Animals are eligible to sell must weigh a minimum weight of 1,050 pounds.
2. Any breed or cross breeds will be eligible to compete.
3. All market beef must be born in the previous calendar year to be shown.
4. All market beef will be weighed and classes will be broken into weight classes upon the decision of the show superintendent.
5. All beef must be penned in the designated areas.
6. All beef exhibits must be shown haltered.

44000 Market Beef [Minimum 1,050 Pounds] (Limit of 4)

### **Market Goat**

1. To be eligible to show, all market goats must weigh a minimum weight of 50 pounds. There is no maximum weight. Animals are eligible to sell must weigh a minimum weight of 50 pounds.

2. Any breed or cross breeds will be eligible to compete.
3. All market goats must be born after 1-1 of current year to be shown.
4. All market goats will be weighed and classes will be broken into weight classes upon the decision of the show superintendent.
5. All goats must be penned in the designated areas.
6. All goats must be shown with all four feet on the ground. Exhibitors may use a collar, a collar with a short lead, or a halter when showing. Medium (3mm or smaller) pinch collar will be allowed.
7. Horns should be tipped and rounded.
8. No bucks of any age will be allowed on the grounds. Only does can show.
9. All market goats must have baby teeth in place with no visible signs of permanent teeth.

#### 44100 Market Goat [Minimum 50 Pounds] (Limit of 4)

##### **Market Sheep**

1. To be eligible to show, all market sheep must weigh between 90 to 165 lbs. Animals are eligible to sell must weigh between 90 to 165 lbs.
2. Any breed or cross breeds will be eligible to compete.
3. All market sheep must be born after 1-1 of current year to be shown.
4. All market sheep will be weighed and classes will be broken into weight classes upon the decision of the show superintendent.
5. All sheep must be penned in the designated areas.
6. All market sheep are required to have lamb teeth to show, in sheep classes.

#### 44200 Market Sheep [90-165 Pounds] (Limit of 4)

##### **Market Swine**

1. To be eligible to show, swine must weigh between 220 to 300 lbs. Animals are eligible to sell must weigh 220-300 lbs., but animals over 280 lbs. will sell at no more than 280 lbs.
2. Any breed or cross breeds will be eligible to compete.
3. All market swine must be born after 1-1 of current year to be shown.
4. All market swine will be weighed and classes will be broken into weight classes upon the decision of the show superintendent.
5. All swine must be penned in the designated areas.
6. Catch-It-Pig - Rules and regulations are available at the Extension Office or online at [www.nwksfair.com](http://www.nwksfair.com) or [www.sunflower.ksu.edu](http://www.sunflower.ksu.edu). Rules and regulations are those of the Catch-It-Pig Committee and their decision on all matters is final. The contest is open to all Sherman County youth age 7-13 as of September 1 of the current year. Youth may not be enrolled in the swine project. Contestants must have written consent of a parent or guardian. The Northwest Kanas District Fair Board and the Catch-It-Pig Committee will not be responsible for any accident or injury connected with the contest. Completed application must be submitted prior to the deadline.
7. Catch-It-Pig - Is eligible for market swine grand champion and reserve grand champion.

- 44300 Market Swine [220-300 Pounds] (Limit of 4)
- 44301 Catch-It-Pig [220-300 Pounds] (Limit of 1)
- 44302 Catch-It-Pig Companion [220-300 Pounds] (Limit of 1)

**Poultry**

1. All chickens must originate from a Pullorum-Typhoid clean flock as evidenced by a properly signed form OR evidence that the entry was purchased from a P-T clean source and have been physically separated from infested flocks OR present a properly signed form indicating that the entry has had a negative P-T test within 90 days prior to the above.
2. Premiums will be withheld if poultry are not fed, watered, cages cleaned daily and assistance is not given in Saturday clean-up after release.
3. All poultry going on to state fair should have numbered leg bands.
4. All birds must be deloused prior to the show to assist in prevention of the spread of diseases and parasites. Do not bring entry if there is a sickness in the flock.
5. Poultry signs may be placed on cages after judging--not to exceed 4" x 12" and are subject to the superintendent's approval.
6. Judging will be done primarily on the basis of exhibition qualities as described in "The American Standard of Perfection".
7. Designate breed of poultry on entry tag for each exhibit.

- 44400 Large Fowl - Standard Breeds - One YOUNG Bird of Either Sex (Limit of 1)
- 44401 Large Fowl - Standard Breeds - One OLD Bird of Either Sex (Limit of 1)
- 44402 Large Fowl - Production Pullets - Pen of 3 (Limit of 1)
- 44403 Large Fowl - Production Hens - Pen of 3 (Limit of 1)
- 44404 Large Fowl - Dual Purpose Pullets - Pen of 3 (Limit of 1)
- 44405 Large Fowl - Dual Purpose Hens - Pen of 3 (Limit of 1)
- 44406 Bantams - Standard Breeds - One YOUNG Bird of Either Sex (Limit of 1)
- 44407 Bantams - Standard Breeds - One OLD Bird of Either Sex (Limit of 1)
- 44408 Waterfowl - Ducks, Call, or Bantam, All Breeds - One Bird of Either Sex (Limit of 1)
- 44409 Waterfowl - Ducks, All Breeds - One Bird of Either Sex (Limit of 1)
- 44410 Waterfowl - Geese, All Breeds - One Bird of Either Sex (Limit of 1)
- 44411 Exhibition - Turkey, All Breeds - One Bird of Either Sex (Limit of 1)
- 44412 Exhibition - Other Poultry, All Breeds - One Bird of Either Sex [Peafowl, Pheasant, Etc.] (Limit of 1)

**Rabbit**

1. Any rabbit shown must have been owned by the 4-H'er before June 15th of the current year.
2. All rabbits will be divided into age classes (pre-junior, junior, 6-8 months, and senior) and judged according to their breed standard as listed in the ARBA "Standard of

Perfection". Only breeds recognized by ARBA may be shown in the breed classes.

3. There must be two entries to form a breed class. If there are fewer than two entries, the rabbit will be placed in an All Other Breeds Class.
4. Crossbreeds will compete in the All Other Breeds Class.

- 44500 Pre-Junior Doe [Certain Breeds Only, per State Fair Rules] (Limit of 1)
- 44501 Junior Doe - Under Six Months of Age (Limit of 1)
- 44502 Doe 6-8 Months (Limit of 1)
- 44503 Senior Doe Over 8 Months (Limit of 1)
- 44504 Pre-Junior Buck [Certain Breeds Only, per State Fair Rules] (Limit of 1)
- 44505 Junior Buck Under 6 Months (Limit of 1)
- 44506 Buck 6-8 Months (Limit of 1)
- 44507 Senior Buck Over 8 Months (Limit of 1)
- 44508 Meat Pen - 3 Rabbits of the Same Breed and Variety (Limit of 1)
- 44509 All Other Breeds (Limit of 1)

### **Rabbit Fur**

1. Fur entries must be made from rabbits that are entered in the regular breed classes.
2. This is a ribbon class only. There will be no plaque given.

- 44600 Normal White Fur (Limit of 1)
- 44601 White Satin Fur (Limit of 1)
- 44602 White Rex Fur (Limit of 1)
- 44603 White Wool (Limit of 1)
- 44604 Normal Colored Fur (Limit of 1)
- 44605 Colored Satin Fur (Limit of 1)
- 44606 Colored Rex Fur (Limit of 1)
- 44607 Colored Wool (Limit of 1)

### **Sheep Lead**

1. Judging will be held prior to sheep show in the livestock arena.
2. Males and females may enter.
3. Contestants are not required to be enrolled in the sheep project, but must have some knowledge of sheep production.
4. Contestant does not have to own sheep, but may be sponsored by a sheep producer.
5. Contestants will wear a garment of at least 30% wool.

- 44700 Junior Age 7-12 - Sheep Lead (Limit of 1)
- 44701 Senior Age 13-18 - Sheep Lead (Limit of 1)

### **Showmanship Beef**

1. Showmanship for livestock will be judged during their respective shows.
2. The livestock must be owned by the showman.
3. All beef exhibits must be shown haltered.

- 44800 Junior Age 7-9 - Beef Showmanship (Limit of 1)
- 44801 Intermediate Age 10-13 - Beef Showmanship (Limit of 1)
- 44802 Senior Age 14-18 - Beef Showmanship (Limit of 1)

### **Showmanship Goat**

1. Showmanship for livestock will be judged during their respective shows.
2. The livestock must be owned by the showman.
3. Goats must be shown with all four feet on the ground. Exhibitors may use a collar, a collar with a short lead, or a halter when showing. Medium (3mm or smaller) pinch collar will be allowed.

44900 Junior Age 7-9 - Goat Showmanship (Limit of 1)

44901 Intermediate Age 10-13 - Goat Showmanship (Limit of 1)

44902 Senior Age 14-18 - Goat Showmanship (Limit of 1)

### **Showmanship Poultry**

1. Showmanship for livestock will be judged during their respective shows.
2. The livestock must be owned by the showman.

45000 Junior Age 7-9 - Poultry Showmanship (Limit of 1)

45001 Intermediate Age 10-13 - Poultry Showmanship (Limit of 1)

45002 Senior Age 14-18 - Poultry Showmanship (Limit of 1)

### **Showmanship Rabbit**

1. Showmanship for livestock will be judged during their respective shows.
2. The livestock must be owned by the showman.

45100 Junior Age 7-9 - Rabbit Showmanship (Limit of 1)

45101 Intermediate Age 10-13 - Rabbit Showmanship (Limit of 1)

45102 Senior Age 14-18 - Rabbit Showmanship (Limit of 1)

### **Showmanship Sheep**

1. Showmanship for livestock will be judged during their respective shows.
2. The livestock must be owned by the showman.

45200 Junior Age 7-9 - Sheep Showmanship (Limit of 1)

45201 Intermediate Age 10-13 - Sheep Showmanship (Limit of 1)

45202 Senior Age 14-18 - Sheep Showmanship (Limit of 1)

### **Showmanship Swine**

1. Showmanship for livestock will be judged during their respective shows.
2. The livestock must be owned by the showman.

45300 Junior Age 7-9 - Swine Junior Showmanship (Limit of 1)

45301 Intermediate Age 10-13 - Swine Showmanship (Limit of 1)

45302 Senior Age 14-18 - Swine Showmanship (Limit of 1)

\*\*\*\*\*

# Open Class Entry Tag

Get No. at  
Exhibitor No.: Open class office

Circle One    Adult    Youth

Entry No.: 184

Entry Name: Tomatoes  
3 ced

Champion  
Reserve Champion

Blue

Red

White

Name: John Doe

City: Goodland

Champion  
Reserve Champion

Blue

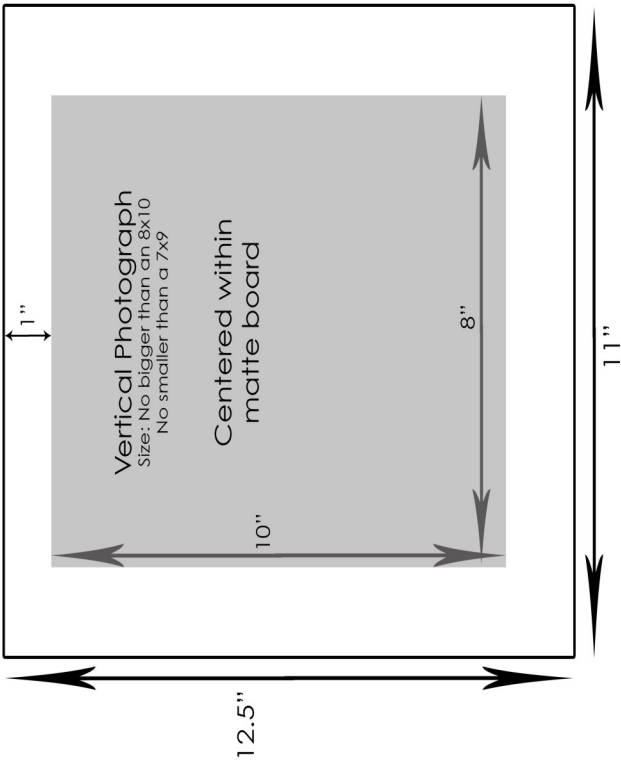
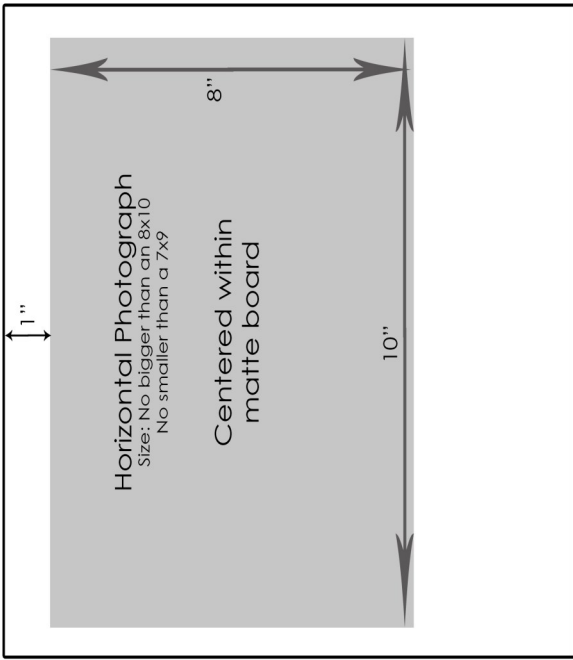
Red

White

Sticker

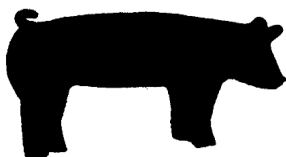
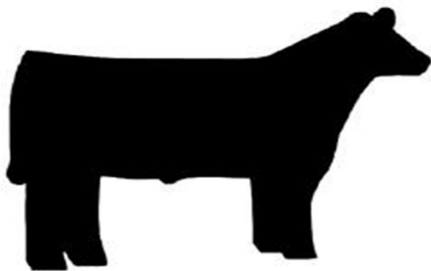
Example

## Photography Mounting Diagram for Open Class and 4-H





## 2018 4-H Livestock Sale Order



## 2017 4-H Donors

A Head of Times  
All About You Salon & Spa  
BankWest of Kansas  
Bryan & Cinda Hatcher  
Butterfly Aviation  
Carl & Elmarie Nelson  
Carol Gattshall Memorial  
Casey Henderson  
Cash & Amanda Schilling  
CNI -Sonic  
Cochran Farm Supply  
Country Clovers  
Cris Wilson  
Dan & Charlene Mangus  
Dan Brenner Ford  
Dennis & Dorothy Bentzinger  
Doug & Jeanne Irvin  
Doug Sederstrom  
Fairbanks Law, P.A.  
Farm Credit  
First National Bank  
Frontier Ag  
Gambino's Pizza  
Garcia's  
Garrett Coin & Laundry  
Goodland Medical Arts Pharmacy  
Harlan & Cora House  
Harold & Karen Gillihan  
Healthful Solutions  
Heartland Animal Hospital  
Holiday and Comfort Inn  
Homeland Realty & Auction  
Iva Lee Stephens  
J Rod's Repair  
Jeanne Harding  
Jeff & Anita Henderson  
Jeffery Waterhouse  
Jesse & Doris Craft  
Jim Alcorn/ Shelter Insurance  
Junior Leaders  
Karen Hooker  
Karen Vandiver  
Katherine Franklin  
Koons - Russell Funeral Home  
L & W Andrist Insurance  
Lavaughn Glasco  
McClungs Appliance  
McClure Plumbing & Heating  
Mellanie Goodwin  
Millers Construction  
Morrison Optometric  
Newman Vision Care  
NexTech Wireless  
Overhead Door  
Prairie Sky Capital  
Rasure Lumber  
Richard & Jean Pettibone  
Richard & LaDona Frerichs  
Richardsons Homestead Realty  
Robert Moyer  
Ron & Marsha Schilling  
Ron Hardings Expert Carpet Care  
Ruleton Eager Beavers  
S&T Telephone Cooperative  
Sara Johnson  
Scheopner's Water Conditioning  
Serendipity and Batemans  
Shear Dimensions  
Sherman Co. Abstract  
Shirley Pearson  
Short & Son Trucking  
Simplot

Sunflower 4-H  
T-Bar Ranch  
T-Bone Feeders  
Terry Imel  
The Insurance Agency  
The Scoular Grain Company  
Tyler Henderson  
Wane's Carpey & Drapery  
Western State Bank  
Wheat Ridge Acres  
Wilkins Truck & Trailer  
Zona Price/Goodland Elks Lodge  
Zuspan & Zuspan

## **2017 4-H Livestock Buyers**

21st Century Bean  
Ag Power Equipment  
Agri-Liquid  
American Implement  
Bankwest  
Bateman Funeral Home  
Billinger Farms  
Cowan Show and Feed  
Crop Production Services  
Dan Brenner Ford  
Dorn Seeds  
Duell Farms  
Eklund Insurance  
Farm Credit  
First National Bank  
Frontier Ag  
Heartland Animal Hospital  
Helena Chemical  
High Plains Performance  
Homestead Realty and Auction  
Insurance Agency  
Jack Mitchek  
Keith Coon  
Lobo Production  
Mark Swayne  
McClung's Appliance & Furniture  
Medical Arts Pharmacy  
Mosbarger Family Farms  
Northwest Kansas Title Co  
Northwest Tech College  
Oakley Veterinary Service  
People State Bank  
Pioneer Seeds  
Rasure Lumber Do it Center  
Roxann Kling  
Schilling Cattle  
Schilling Farm Service  
Schlosser Inc. - Ready Mix Concrete  
Scott Jarrett  
Sederstrom Farms  
Seed Solutions  
Shores Napa Auto Parts  
Stevens Farms  
T-Bar Ranch  
Terry & Shari Taylor  
Tri-State Carriers  
Truck & Tractor Repair  
Vision Source of Goodland  
Western State Bank  
Wolf Farms  
Yost Farm Supply

Northwest Kansas District Free Fair, Inc.  
7170 Rd 10  
Goodland, KS 67735  
785.899.5888  
785.890.4886 (Use Fair Week)  
[www.nwksfair.com](http://www.nwksfair.com)

Sunflower Extension District #6  
813 Broadway Room 301  
Goodland, KS 67735  
Phone: 785.890.4880  
Fax: 785.890.4879  
[www.sunflower.ksu.edu](http://www.sunflower.ksu.edu)

Northwest Kansas District Free Fair, Inc.  
All rights reserved. Copyright © 2018